



# LEARN. CARE. ACT.

2015 Community Impact Report





# LEARN. CARE. ACT.

WOODLAND  
PARK ZOO SAVES  
ANIMALS AND  
THEIR HABITATS  
THROUGH  
CONSERVATION  
LEADERSHIP  
AND ENGAGING  
EXPERIENCES,  
INSPIRING PEOPLE  
TO LEARN, CARE  
AND ACT.

## DEAR FRIENDS,

With your help and contributions, 2015 was a great year for Woodland Park Zoo. We were fortunate to set yet another attendance record—1.33 million visitors. Exciting year-round programs and new partnerships with Seattle Public Library and wildlife conservation groups helped our visitors learn more, care more deeply and take appropriate action to save animals here and around the world.

We're also especially grateful to the 1,250+ donors to the magnificent, new Banyan Wilds exhibit. Seattle's critically endangered Malayan tigers debuted to great awe in May. We continue to encourage thousands of children and families to join us in the urgent effort to save tigers, along with our partner, Panthera, and our colleagues on the frontlines in Malaysia. Together we're ensuring that imperiled species and habitats do not slip from the planet.

Rethinking humanity's relationship with our planet is one of the most ambitious and complex ethical challenges of our time. Climate change, habitat loss and other environmental factors remain serious threats. Continued urbanization thwarts our connection to wild landscapes and animals, and today 7 billion people are putting unprecedented stress on Earth's life-supporting ecosystems.

Zoos matter to this big picture. In fact, modern conservation zoos are at the forefront of a paradigm shift in how we care, how we learn and how we live. No other type of organization can engage such broad segments of society in creating a sustainable future as well as zoos can. That's because only zoos can powerfully combine intimate animal experiences; expertise in animal welfare and conservation breeding; hands-on environmental learning; and action-centered programs that directly engage communities in protecting wildlife and living landscapes.

Our next President and CEO is himself a noted visionary in this arena. As this publication arrives to you, Alejandro Grajal, PhD, begins an exciting new chapter with us. Most recently a top executive at Brookfield Zoo in the Chicago area, his deep and global expertise in conservation science, environmental education, and animal welfare advocacy brings unparalleled skill and value to our mission. He's a natural leader who will guide our evolution as a leading conservation organization and community anchor. Please join us in welcoming Alejandro.

On behalf of the staff, volunteers, and Board of Directors, thank you Woodland Park Zoo supporters. You are integral to our success story.



Alejandro Grajal, PhD

Bruce W. Bohmke  
Acting President and CEO

Laurie Stewart  
Chair, Board of Directors



Jeremy Dwyer-Lindgren, WPZ



Dennis Dow, WPZ

## WPZ DIRECTORS EMERITI

Rick Alvord	B. Gerald Johnson	John Oppenheimer	Janet True
Maria Barrientos	Victoria Leslie	Bob Ormsby*	Maggie Walker
Kathie Claypool	Bill Lewis	Nancy Pellegrino	Stuart Williams
Virgil Fassio	James McGraw	Cam Ragen	Sally Wright
Joshua Green III	Charles Morse	Dale Sperling	Sheila Wyckoff-Dickey
Jan Hendrickson	Phil Nudelman	R. Jay Tejera	
Carol Hosford	Mary Odermat	Dave Towne	* Deceased

## WPZ BOARD OF DIRECTORS through December 31, 2015

### OFFICERS

- Laurie Stewart**, Chair  
*President and CEO, Sound Community Bank  
President and CEO, Sound Financial Bancorp Inc*
- Jeff Leppo**, Vice Chair  
*Seattle Managing Partner, Stoel Rives LLP*
- Cammi Libby**, Treasurer  
*CFO, Legacy Companies*
- Rob Short**, Secretary  
*Corporate Vice President, Windows Core, Microsoft (ret.)*
- Nancy Pellegrino**, Immediate Past Chair  
*Principal, Pellegrino Advisory Services LLC*

### DIRECTORS

- Linda Allen**, Founder, *The Alleniana Foundation*
- David S. Anderson**, SVP, *Private Client Advisor, Bank of America, US Trust WA (ret.)*
- Marianne Bichsel**, President, *Bichsel Public Affairs*
- Kristi Branch**, Sr. Program Manager, *Pacific Northwest National Laboratory*
- Lisa Caputo**, Founder, *Liberty Dialysis*
- Dino De Vita**, President, *Pacific Northwest Region Wealth Management, Northern Trust*
- Janet Dugan**, Principal, *NBBJ*
- Kenneth Eakes**, Asst. VP, *Manufacturing, Costco Wholesale Corp.*
- David Goldberg**, President, *Mithun*
- Irwin Gorman**, Partner, *Deloitte Consulting (ret.)*
- Lisa Graumlich**, Dean, *College of the Environment, University of Washington*
- Jason Hamlin**, First Vice President – *Wealth Management, Wealth Advisor, Institutional Consultant, The Arbor Group, UBS Financial Services Inc.*
- Rick Holzli**, General Manager for Sales & Marketing, *Microsoft Corp.*
- Glenn Kawasaki**, Biotech Consultant; *President and CEO, Accium BioSciences, Inc.*
- Rob Liddell**, Medical Director, *Center for Diagnostic Imaging*
- Leigh McMillan**, VP of Marketing, *Awo Inc.*
- Laura Peterson**, VP, *Business Development and Strategic Integration, The Boeing Company*
- Larry Phillips**, King County Councilmember
- Matt Rosauer**, Partner, *Pine Street Group LLC.*
- Patti Savoy**, Community Volunteer
- Kevin Schofield**, Freelance Writer and Business Consultant; *COO Microsoft Research (ret.)*
- Greg Schwartz**, Chief Business Officer, *Zillow Group*
- Elizabeth Sicklich**, Philanthropist and Community Volunteer
- Bryan Slinker**, Dean, *College of Veterinary Medicine, Washington State University*
- Jill Walker**, VP Controller, *Starbucks Coffee Company*
- Margaret Wetherald**, Partner, *Keller Rohrback LLP (ret.)*
- Kathy Williams**, SVP and Director, *Community Relations, HomeStreet Bank*
- Susie Wyckoff**, Owner, *Ants at a Picnic*

- Jesús Aguirre**, ex officio, *Superintendent, Seattle Parks and Recreation*
- Deborah Jensen**, ex officio, *President and CEO, WPZ (111-617)*
- Bruce Bohmke**, ex officio, *Acting President and CEO/COO, WPZ (618-12131)*



# TOP SUCCESSES YOU HELPED ACHIEVE IN 2015

## MEDICAL PARTNERSHIP ADVANCES GREAT ANIMAL CARE

Our male gorilla, Vip (Very Important Primate), is breathing easier because of breakthroughs in animal care thanks to donations and in-kind services from members, donors and community partners, such as the Center for Diagnostic Imaging. Our zoo veterinary team partnered with sinus surgeon Greg Davis, assisted by several specialists in allergy and immunology, to diagnose and treat Vip's recurring sinus polyps and infection. In 2015, Vip's second surgery finally led to a full recovery – all the more evident when he fathered a new baby with 19-year-old Nadiri in November. Thanks to collaborative ingenuity, Vip will continue to lead his growing family and inspire thousands of zoo guests with his species' story for many healthy years to come.

*Photo courtesy of McKenna Princing, UW Medicine.*

**“It is gratifying to know the animals at Woodland Park Zoo have such caring and compassionate professional animal care staff. It was an honor to work with this magnificent patient.”**

*Greg Davis, MD, MPH, Associate Professor of Otolaryngology and Head and Neck Surgery and Director of Rhinology and Endoscopic Skull Base Surgery, University of Washington, who collaborated with our own Darin Collins, DVM, Director of Animal Health*



## BABY GORILLA YOLA STEALS HEARTS

In November, a female western lowland gorilla was born to first-time mother, Nadiri, and father, Vip. When Nadiri did not initially show strong maternal behaviors, attentive zoo staff instituted 24/7 baby care behind the scenes in the sleeping dens of the gorilla exhibit. There, mother and daughter learned new things about each other day by day. The baby smelled and saw her mother and other gorillas; developed motor skills; explored surroundings while getting stronger; and cut new teeth. Nadiri showed maternal progress, such as giving the baby fresh leaf sprigs to chew on. Keepers and curators were cautiously optimistic that mother and baby would eventually bond. Yola's birth carries on her grandfather, Congo's, valuable genetic heritage. He was born in the wild and is a "founder" animal for the Gorilla Species Survival Plan population which aims to sustain this species in zoos for the next 100 years. Yola means "firefly" in Hausa, a name gorilla keepers selected from a public naming contest to highlight the baby's role in keeping the flame of her lineage alive.

*Photo by Jeremy Dwyer-Lindgren, WPZ.*



## YOU MADE HISTORY FOR WILDLIFE, WASHINGTON!

Thank you for helping to stop wildlife poachers in their tracks. Thousands of zoo members, donors, volunteers, and staff helped Washington voters fight the global extinction economy, deciding that wildlife need their ivory, skins, and bones more than humans need exotic trinkets, furniture and meats. In November, Initiative 1401 passed with 70 percent of the vote, ushering in a state law that strengthens penalties and bans commerce of products made from 10 of the most trafficked endangered species. WPZ's advocacy and outreach role was significant in the coalition's success, which involved the Humane Society of the United States, Seattle Aquarium, Point Defiance Zoo & Aquarium, the Sierra Club, WildAid, Paul Allen, Wildlife Conservation Society and the 96 Elephants campaign.

*Photos courtesy of Save Animals Facing Extinction and Paul Maman.*

## TECH INNOVATION FOR NORTHWEST CONSERVATION

WPZ's Living Northwest program, Microsoft Research, and Idaho Fish and Game have taken non-invasive wildlife conservation research to new heights. Researchers teamed up and designed a tech device to facilitate monitoring North Cascades' species of concern in winter's harsh conditions, when trekking in is too dangerous. Some 70 programmable, long-lasting (six to nine months) scent dispensers were deployed and paired with nearby camera traps. As the scents "lure" wild animals into view, the cameras record their range use and activity. High school Science, Technology, Engineering and Math students replicated the clever devices, while WPZ grizzly bear Keema (pictured above) "bear proof" tested the protective casings. Thanks to supporters and funding from the Paul G. Allen Family Foundation, the devices will potentially revolutionize winter data collection and help better protect elusive wolverines, lynx, fishers and martens.

*Photo by Jeremy Dwyer-Lindgren, WPZ.*

**“WPZ has proven a valuable partner and creative innovator in Northwest conservation, and its passionate audience of wildlife advocates has helped us mobilize Washingtonians to strengthen protections for some of the world's most iconic and endangered species.”**

*Kathleen Gobush, PhD, Senior Project Developer—Wildlife, Vulcan Inc.*





“What a pleasure to collaborate with WPZ on our Summer of Learning celebration *Wild Science!* The zoo helped the library engage new audiences while bringing a wonderful nature-based element to our offerings. This was truly a win-win for the kids and families we serve.”

*Marcellus Turner, City Librarian, Seattle Public Library*



## A HIGHLY ANTICIPATED OPENING: BANYAN WILDS

### Your gateway to tiger conservation

Banyan Wilds, our most ambitious new exhibit in 20 years, opened in May, a grand welcome of tigers back to the zoo. Three Malayan male tigers became precious wildlife ambassadors sharing the story of their species' tenuous existence in Peninsular Malaysia, and of the people working tirelessly on the frontlines to protect their forest habitats and stop poachers in their tracks. The new wildlife journey shows us how, together, we can end the extinction economy that is causing these iconic felines to vanish.

**Designed for caring.** In the heart of the zoo, the last “old” exhibit to undergo major renovation transformed from 1950’s concrete into a lush, modern-day, naturalistic wonder. From jostle trees, hot rocks, and rockscapes tailored for animal enjoyment and health, to innovative viewing angles, and the excellent care they receive, closer than ever before – every feature of the 2-acre immersive exhibit is designed to elicit empathy for tigers and sloth bears and for the many other species (including people!) who share their forests. The Field House, oil palm plantation, and bamboo forest remind us that wildlife and humans co-exist in, and depend upon, some of the same landscapes. We are reminded how truly linked we are to their world, and that species and habitat protection will pay dividends to us all for decades to come.

**Designed for saving.** Fewer than 350 Malayan tigers remain in the wild, but we are helping to bring them back from the brink. That’s the promise of our 10-year, \$1+ million WPZ & Panthera Malayan Tiger Conservation Project. In 2015, the project’s third year, we made great progress in tiger research and protection in the historic Taman Negara National Park and the Kenyir Wildlife Corridor.

We nearly doubled the core tiger research area and secured new tiger breeding hotspots to protect with expanded “camera trapping.” With enhanced surveillance training and more monthly joint patrols by project staff and government personnel, deterrence is working: for the first time in two years, no tiger snares or poachers were observed in the core area. Community and religious leaders are proactively encouraging fellow citizens to join the fight to save the Malayan tiger as a national and world treasure.

**Designed for impact.** Every visit to Banyan Wilds helps to save the critically endangered tiger! Last year, you and more than 1.33 million zoo visitors learned this compelling story, inspired by up-close experiences with tiger brothers Liem, Eko and Olan, their devoted keepers, and new interpretive and education features. Of guests surveyed in exit interviews, 92 percent said they visited primarily to experience the new exhibit! Many reported feeling changed by the experience, inspired to take action for tigers such as by voting for the citizen-led I-1401 wildlife protection initiative, donating funds or joining our Tiger Team.

Gifts from more than 1,250 individuals, families, foundations, and corporations made this exhibit possible! THANK YOU!

### SHOWING YOUR STRIPES

Your enthusiasm for the Banyan Wilds opening created tiger buzz all summer long around Puget Sound. In April, we launched “Show Your Stripes” at the Space Needle, a campaign to raise awareness of the big cat’s plight. Activities included Tigers on Tour – 10 statues designed by local artists and unveiled at popular establishments and community institutions. Several tiger statues sold for a whopping \$20,000 at the 39th Annual Jungle Party auction, where Seattle’s wildest fundraiser brought in over \$2 million – a record! Rocking these community engagement efforts off the charts was devoted board member Patti Savoy and her high-impact friends, who as co-leaders rounded up new audiences and terrific pre-auction contributions for the zoo’s mission. Thank you!

### A PARTNERSHIP WORTH ROARING ABOUT

Two bedrock community institutions, Seattle Public Library and Woodland Park Zoo, teamed up this summer to keep kids wild about science, reading, and, of course, tigers. *Wild Science! Summer of Learning*, a series of programs, experiments, activity booklets and book giveaways, online games, and mobile pop-up libraries combined the best of zoo and library content for learning about the environment and Science, Technology, Engineering and Math. The zoo’s Little Critters, Raptors and Wild City programs traveled to 13 library locations while a three-day celebration in September invited library patrons from underserved neighborhoods to the zoo with free bus transportation. The *Wild Science!* collaboration engaged 6,000 children and adults and helped the library increase the overall reach of its summer programming by 15 percent over the year before, demonstrating the power of partnerships.

“What WPZ is doing for our wildlife and our world astounds me. It inspires the generosity and caring of our entire community to bring a compelling tiger conservation story to life. Because a world without tigers is unimaginable.”

*Patti Savoy, WPZ Board member and Jungle Party 2015 Co-chair*



## LOVE FOR YOUR ZOO

Your support helped us welcome a record-breaking 1.33 million guests — a new attendance record. What's more, 96 percent of guests surveyed said "my visit met or exceeded my expectations," and 93 percent said "my visit was worth the time and money." Because of you, we are continuously improving up-close animal encounters, customer services and amenities. With our new Banyan Wilds exhibit, home to tigers and sloth bears (see page 6), and another successful WildLights winter festival, WPZ truly is Seattle's best, year-round resource for enjoyable and educational family experiences.

*Photo by Jeremy Dwyer-Lindgren, WPZ.*



## NEW ALLIANCE HELPS SAVE ELEPHANTS

When humans and elephants are in conflict over space to live, elephants lose. And because the health of the world's forests is connected to healthy elephant populations, many other species lose, too, including humans. Woodland Park Zoo is working to change that! With Oregon Zoo, Houston Zoo and the wildlife organization Hutan, we developed the Borneo Elephant Zoo Alliance to protect the endangered Borneo pygmy elephant on the Malaysian island. Sharing our resources and expertise with range country experts will lead to long-lasting conservation solutions that balance the needs of local ecosystems and cultures. Central to the Alliance's strategy is research-based land-use planning, enabling local communities to protect migration byways for elephant families while also meeting local livelihood needs. Although we made the difficult but necessary decision to close WPZ's elephant program after 90+ years, our commitment to a world in which elephants thrive remains unchanged.

*Photo courtesy of Hutan.*



## IF ANYONE CAN MEET A CONSERVATION CHALLENGE, SEATTLE YOUTH CAN!

Launched by the teens of WPZ's ZooCorps, in partnership with Pacific Science Center's Discovery Corps and Seattle Aquarium's Youth Ocean Advocates, the new Seattle Youth Climate Action Network took on a Summer Transportation Challenge, researching and testing alternative transportation to reduce local carbon emissions. They used King County Metro Transit's RideShareOnline.com, and trained in behavior change strategies with WPZ audience research staff. In the fall, WPZ hosted Seattle Youth CAN's first "Summit," where 150 teens and community participants shared solutions with leading scientists and professionals from University of Washington, NOAA, King County Department of Natural Resources and Planning, King County Metro, the Alliance for Jobs and Clean Energy, and Seattle City Light. Establishing this teen-led climate movement is made possible by support from Innovative Solutions Grants+ and The Ocean Project.

*Photo by WPZ.*



“Highly valued by the community, WPZ is a tremendous asset to our city's goals to make all parks places of learning and social belonging, while encouraging children and families to protect green space for generations to come.”

*Jesús Aguirre, Superintendent, Seattle Parks and Recreation*

## HELPING PEOPLE HELP WILDLIFE

You applauded when the Tree Kangaroo Conservation Program succeeded, in 2009, in helping local landowners in Papua New Guinea establish their first nationally protected Conservation Area. Recently, the Equator-Prize winning TKCP team attracted major investments from the World Bank's Global Environment Facility and the Rainforest Trust, for work that ultimately will double the Conservation Area to 391,000 acres over the next five years. In 2015, these prestigious funders granted \$2.6 million and \$250,000, respectively, to help 50 villages strengthen local conservation efforts, expand sustainable livelihoods commerce, and bring more clan-owned forest landscape under protection and local management. The work is in collaboration with the United Nations Development Program, the PNG government and Tenkile Conservation Alliance.

*Photos: Village and landscape in Yopno-Uruwa-Sam watershed; photo by TKCP. TKCP Mapping Officer Victor Eki (standing) lends advice during a land-use planning reconfirmation workshop in Yawan village; photo by Karau Kuna, TKCP. Tree kangaroo with a National Geographic Society Crittercam™ collar before release; photo by Lisa Dabek, TKCP.*



*Deborah Jensen, PhD  
WPZ President and CEO, 2002-2015*

## A PASSION FOR CONSERVATION

We "roar" our collective gratitude to Deborah Jensen who combined science, conservation and organizational savvy to make the zoo a place where people can create a sustainable future for wildlife. Leading the zoo through a dynamic period, she oversaw many milestones, including:

- ★ Transitioning from city to nonprofit management
- ★ Opening award-winning features, such as Jaguar Cove and the Humboldt penguin exhibit, and installation of the Historic Carousel and bold new vision for Banyan Wilds
- ★ Fostering new partnerships to strengthen species-specific animal care, protection of wildlife and habitats, and engaging science-learning experiences
- ★ Emerging financially healthy after the global recession, with zoo attendance, membership, and earned and philanthropic revenues at all-time highs
- ★ Concluding the More Wonder More Wild Campaign \$3.5 million ahead of its \$80 million goal, and growing the zoo's endowment to \$12 million

THANK YOU,  
DEBORAH!



# SUSTAINING THE FAMILY TREE



## ZOO ANIMALS MAKE THE WORLD A BETTER PLACE FOR ALL SPECIES

### Matchmaking in zoos

Zoo-based conservation breeding is an essential aspect of our work with other accredited zoos. Across North America, WPZ participates in 95 Species Survival Plans (SSPs) led by expert keepers and curators who collaborate to determine scientifically which animals are ideal for pairing, breeding and rearing. These efforts keep zoo animal populations a healthy size and ensure genetic diversity while also enriching quality of life for animals, because reproducing and/or raising families are a natural experience of being an animal. Populations at the level of the entire species also benefit; for some endangered species, zoos are already their last hope for a future. In fact, certain zoo-based programs even reintroduce animals into protected wild sites in partnership with state and federal agencies to strengthen at-risk wild populations before it's too late.

### Supporting species survival in the wild

As the global human population surpasses the 7 billion mark, and with our impact on a finite planet increasing exponentially, an unprecedented number of non-human species have faced precipitous declines. WPZ collaborates with scientists, conservationists and policy makers in the Northwest and around the world to help change this trend. A key role we play in wildlife survival is leading and supporting more than 35 innovative, in-country efforts dedicated to help local communities protect wildlife habitats, breeding and feeding grounds, and migration routes for threatened and endangered species. Many of our field conservation efforts are linked directly to the species ambassadors you see in our award-winning naturalistic exhibits, where you connect directly and up close with the wonder of animals that you are helping us to save in the wild.

“For more than a century, AZA zoos have been helping to save endangered species through Species Survival Plan breeding, reintroduction efforts, and conserving habitats in the wild.”

Association of Zoos & Aquariums, Saving Animals From Extinction program



## WHERE ARE THEY NOW?

### 2015 Animals on the Move

Nothing is cuter than a baby animal, as these photos can attest. But zoos like ours have much more than cuteness in mind. So do you, of course!

Each year, you help us welcome animals from, or bid them farewell to, other accredited zoos for breeding or joining another family. In so doing, you also sustain the genetic health and diversity of future zoo animal populations. In many cases, you are also increasing our ability to reintroduce healthy animals to strengthen endangered or threatened wild populations, effectively bringing them back from the brink of extinction.

For more than a century, AZA zoos have been helping to save endangered species through breeding and reintroduction programs, and conserving habitats in the wild. The California condor, Arabian oryx, American bison, and Virgin Islands boa are among 25 species that would be extinct today were it not for collaborative zoo breeding programs.

It's a big job that we must continue. Scientists estimate that wild species are vanishing at a rate that is 1,000-10,000 times higher than before human history.

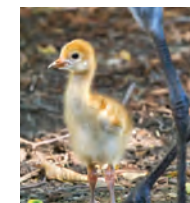
#### RED PANDA (Asia)

Only 10,000 left in wild

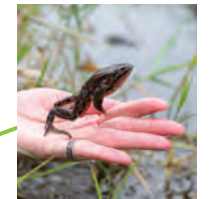
In January, male Yukiko, from Red River Zoo, North Dakota, was introduced as a mate for our female Stellar. No babies just yet, but the two show signs of interest and compatibility!



RED PANDA



HOODED CRANE



OREGON SPOTTED FROG



ASIAN ELEPHANT

#### ASIAN ELEPHANT (Asia)

Only 35,000 left in wild

WPZ's last two Asian elephants, Bamboo and Chai, moved to Oklahoma City Zoo and successfully integrated into a larger, multigenerational family. Bamboo is thriving with the new herd. Sadly, Chai died unexpectedly in 2016.



WESTERN LOWLAND GORILLA

#### WESTERN LOWLAND GORILLA (Africa)

80% population decline since 1990

The November birth of Yola, a fourth generation at WPZ, marked a significant addition to her lineage.



HUMBOLDT PENGUIN

#### HUMBOLDT PENGUIN (S.America)

Only 12,000 left in wild

In July, the milestone 50th chick hatched since the colony's first breeding season in 2010. WPZ has one of the most successful Humboldt penguin breeding programs in North America; 21 birds have joined colonies at other zoos.



JAGUAR

#### ROTHSCHILD'S GIRAFFE (Africa)

Only 1,500 left in wild

Loveable "grumpy-faced" Misawa earned global media attention and visitor adoration. In October, he moved to Gladys Porter Zoo, Texas, to mate and start his own family!



ROTHSCHILD'S GIRAFFE

#### OREGON SPOTTED FROG (Oregon, Washington, British Columbia)

Lost from 90% of former range

WPZ reared and, in October, released 750 frogs into a protected wild site. Since 2007, collaborating NW zoos and agencies released 7,000 frogs (4,200 from WPZ alone). Ultimately reaching a 90% survival rate of reared frogs helped achieve federal listing as threatened.

#### HOODED CRANE (Asia)

Only 10,000 left in wild

In July, WPZ received a foster egg from the International Crane Foundation. Our adult crane pair had not produced viable offspring together but bonded with and raised the foster chick with ease. The chick is doing well and headed to Oklahoma City Zoo.

Woodland Park Zoo and YOU



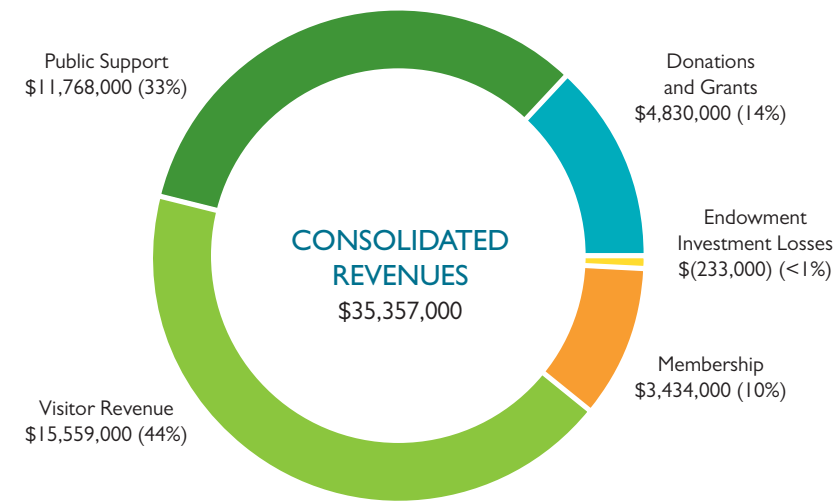
# CREATING VALUE FOR YOU FINANCIAL PERFORMANCE

As good stewards of the public trust, WPZ's foremost financial goal is managing your generous investments wisely and sustainably. That's because you fuel our mission to inspire millions of people to learn, care and act on behalf of wildlife while also ensuring our long-term ability to revitalize and renew our beautiful park's 92-acre infrastructure for generations to come.

In 2015, thanks to your strong support and the dedication of our board, staff and volunteers, WPZ was able to weather important challenges successfully. These included changes in top leadership and a record number of hot summer and rainy winter days; the latter constrained attendance and, thus, earned income. However, good

budget discipline and a temporary hiring freeze helped to offset potential losses stemming from the adverse weather, resulting in only a slight net loss for operations. On the capital side, we spent \$2.3 million of previously raised private donations to complete the new Banyan Wilds exhibit, resulting in a decrease in net assets for the year as we used up amounts carried forward from prior years.

We concluded 2015 maintaining overall financial stability and good revenue diversification, and put additional measures in place for even stronger performance in 2016.



## THIS YEAR...

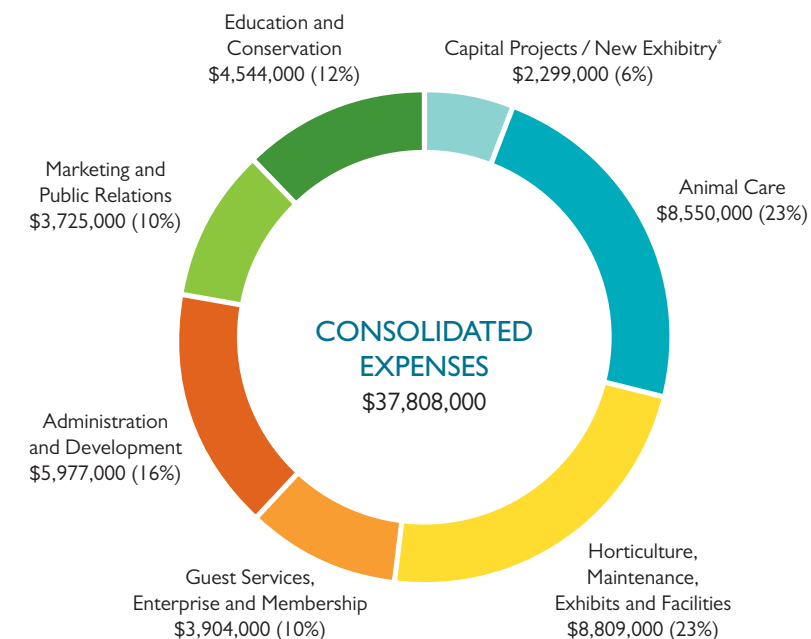
- ★ **65,000 students, teachers, and chaperones** participated in zoo-based programs or self-guided visits, **35%** from underserved schools receiving free zoo entry and bus transportation, with support from King County parks levy.
- ★ **54,000 visitors** enjoyed the zoo's natural wonders on us thanks to our Community Access Program.
- ★ **1,000+** zoo and community group **volunteers** contributed **84,000 hours**, a value of nearly \$2 million.
- ★ **2,180,000 acres** of living landscapes and endangered species are being protected by our Partners for Wildlife.
- ★ **1,330,000 guests** visited the zoo. **Highest attendance yet!**

## SUSTAINABLE. RESPONSIBLE. IMPACT.

To put more money where our mission is, in 2015 the WPZ Board approved a new investment policy for the zoo's endowment that considers environmental, social and corporate governance (ESG) criteria to generate long-term competitive financial returns and positive societal impact. Over the next five years, half of the endowment will transition to investment vehicles that effectively screen for this methodology, which has been shown to perform at least as well as traditionally diversified funds. For years, WPZ has offered a socially responsible option for employees' 403b investments and this added focus on ESG criteria complements our campus-wide sustainability goals.

“With a more climate-conscious investment approach, WPZ members and donors can know that their support will make an even greater difference in the health of our planet's animals and people.”

*Cammi Libby, chair of the WPZ Finance Committee and CFO, Legacy Companies*



\*Banyan Wilds completed with restricted donor funds raised in prior years.





# 2015 PHILANTHROPIC SUPPORT

## THANK YOU FOR BEING ON OUR TEAM

We're grateful for the generous contributions in 2015 from individuals, families, foundations, corporations and public institutions. Strong public and private support makes it possible for this vibrant, forward-looking zoo to thrive. Your support creates more wonder for our community and more wild for our world!

## WILD AT HEART

We salute and thank all those whose generous annual contributions allow us to achieve our day-to-day mission of helping to save wildlife and inspire people to learn, care and act.

### ZOOKEEPERS SOCIETY \$100,000+

Rick and Nancy Alvord  
BECU  
People of the City of Seattle  
Microsoft Corporation  
Estate of Helen and Allen Mull  
The Nysether Family Foundation  
Snoqualmie Tribe  
WONGDOODY  
Anonymous (2)

Larry Crozier and Theresa Hebert  
Kenneth and Pamela Eakes  
Evergreen Point Foundation  
Ernie Gehre  
Katharyn Gerlich  
Glass Distillery  
The Hanlon Family  
Cammi Libby  
Charlotte Y. Martin Foundation  
D.V. & Ida J. McEachern  
Charitable Trust  
Moss Adams LLP

### JAGUAR JAMBOREE \$50,000+

Alaska Airlines  
Ballmer Family Giving  
The Boeing Company  
Brown Bear Car Wash  
Carter Subaru  
Marion Charlston  
Patty Edwards  
Deborah Girdler and David Cutler  
John C. and Karyl Kay Hughes Foundation  
Keith & Mary Kay McCaw Family Foundation  
Pendleton & Elisabeth Miller Charitable Foundation  
Victor and Mary Odermat  
Rainforest Trust  
Ben and Julie Wolff  
Anonymous (2)

M.J. Murdock Charitable Trust  
The Ocean Project  
Allan and Inger Osberg  
Pacifica Law Group  
Pepsi Beverages Company  
Stacy Prineas  
The Norman Raab Foundation  
Raymond James Wealth Management Solutions  
Patti Savoy  
Rob Short and Emer Dooley  
Sound Community Bank  
Sound Credit Union  
Thrive Washington  
Ticketfly, Inc.  
U.S. BANK  
U.S. Department of Agriculture Forest Service  
The Vibrant Village Foundation  
Jill and Scott Walker  
Coralyn Whitney and Dwight Gadd  
Wilburforce Foundation  
The Dean Witter Foundation

### HIPPO HERD \$25,000+

Chap and Eve Alvord  
Carl and Renee Behnke

David and Sally Wright  
Zoos Victoria  
Anonymous (2)

### GRIZZLY GROUP \$10,000+

206 Sports Group  
Linda and Tom Allen  
The Paul G. Allen Family Foundation  
Elias and Karyl Alvord  
Nancy Alvord  
Amgen Foundation  
Dayna Anderson  
Deborah and Erik Anderson  
Artemis Gaia Foundation  
AVMS  
Anthony and Lillian Bay  
Ben Bridge Jeweler  
Bezos Family  
Kristi Branch and James Moore  
Al and Julie\* Buckingham  
Lisa and Mark Caputo  
Chevron Corporation  
Columbia Distributing  
Conservation International  
Costco Wholesale  
Cliff Crandall and Sandy Stelling  
Merrick and Lorraine Darley  
Educational Legacy Fund

## MAKING GENEROSITY A FAMILY AFFAIR

The zoo's **Family Stewardship Program** helps families share important values across generations. Families receive fun tools to help young children experience building strong communities through personal actions and philanthropy at any level. Tools include our Save, Share and Spend banks, Children's Values Cards, Young Philanthropist Recognition Certificates, multi-generational Family Stewardship Tours and pre-cut Tiger Banks. To learn more, contact Anne Knapp at [206.548.2443](tel:206.548.2443) or [anne.knapp@zoo.org](mailto:anne.knapp@zoo.org).

Ellison Foundation  
Bob and Lucie Fjeldstad  
Lois and Curtis Freeman  
Fremont Dock Company  
Georgia Gerber and Randy Hudson  
Irwin and Joan Goverman  
David and Karin Haines  
Stan and Mary Harrelson  
The Hoffmann Family  
Paul Hogle and Karen Malen-Hogle  
Holzli Family  
HomeStreet Bank

Horizons Foundation  
Glenn Kawasaki  
Gary Kunis  
James and Jean Kunz  
Jeffrey W. and Robin J. Leppo  
Rob and Marti Liddell  
Lisa Dupar Catering  
Alex and Steve Lytle  
Gray Madden and Lisa Gold  
McKinstry  
Leigh McMillan  
Pamela Jo Merriman and Sonja Ross  
Trish Miner  
Northern Trust  
Kathy and Brad Nysether  
Mark and Vickie Nysether  
Pam Okano and Dick Birnbaum  
Peach Foundation  
Nancy Philips and W. Blair Brooks  
James and Gaye Pigott  
Robert Plotnick and Gay Jensen  
QFC  
RealNetworks  
Rotary Club of Seattle  
Barbara Sando  
Kevin M. Schofield  
Greg and Lisa Schwartz  
Seattle Seahawks

The Shared Earth Foundation  
Diane and Bob Shrewsbury  
Charles and Lisa Simonyi  
Fund for Arts and Sciences  
Singita  
Smith Brothers Farms  
Gary Smith and Kathleen Kemper  
Starbucks Coffee Company  
Laurie Stewart  
Maryanne Tagney and David T. Jones  
Taronga Conservation Society Australia

John and Marilyn Warner  
West Coast Event Productions  
Western Towboat Company  
Margie Wetherald and Len Barson  
Wockner Foundation  
Anonymous (5)

### DENALI CLUB \$5,000+

Tom Alberg and Judi Beck  
Annie's Fun  
Apex Foundation  
Association of Zoos & Aquariums  
Paul Balle  
Marisa Behnke and Corey Ginsberg  
Merrill Behnke and Ryan Broms  
The Bellevue Collection  
Yahn Bernier and Beth McCaw  
Bruce and Mary Bohmke  
Cathy Breen  
David Brodsky and Juliet Firmansjah  
Lori Campana  
Sonya and Tom Campion  
Chihuly Studio  
City Pass, Inc.

Columbia Bank  
Columbus Zoo and Aquarium  
William and Anne Cronin  
Deloitte  
Delta Dental of Washington  
Overton and Katharine Dennis Fund  
Betsy Dennis  
Detroit Zoological Society  
Janet and Joel Dugan  
Justin Kane Elder  
Barbara Feasey and Bill Bryant  
Hugh and Jane Ferguson  
Foundation

Noelle Ferwerda  
Fred Meyer Fund  
Bill & Melinda Gates Foundation  
Ira and Courtney Gerlich  
Grousemont Foundation  
Maureen and John Harley  
Rosemarie Havranek and Nathan Myhrvold  
International Parking Management  
Iron Springs Resort  
Gavin and Tari Jancke  
B. Gerald Johnson and Linda Larson  
Stacy and Dean Jones  
Juniper Foundation  
Kibble & Prentice Inc.  
KIND LLC  
Kirkland Life Chiropractic  
Kenneth and SaSa Kirkpatrick  
Karen L. Koon  
Susan and Michael Kropp  
Frances Kwapil  
Jacob Langley  
Stephen Lodwick  
Jill and David Maguire  
Jeff and Lisa Mendenhall  
Miikkalsen Charitable  
Remainder Unitrust  
AK Mitchell  
Sandra J. Moss  
National Science Foundation  
NBBJ  
New England Biolabs  
Foundation  
Mary Ellen Olander  
Michael and Shoshanna Osterfeld  
Marla Hamilton Peele  
Nancy and Mark Pellegrino  
Cam and Tori Ragen  
Michael and Susan Redmond  
Regence BlueShield  
Roger Williams Park Zoo  
Matt and Amanda Rosauer  
Kim and Brian Ross  
Julia and Adam Ryan  
Richard Saada  
San Diego Zoo Global  
Seabourn  
Seattle International  
Foundation  
Richard and Linda Sedgley  
Gena Shurtleff  
Bernard and Susan Silbernagel  
Bryan and Kathy Slinker  
Stoel Rives LLP  
The Stonecipher Family  
Glenn\* and Theresa Swan  
Texas Instruments Foundation  
Keith and Sue Tibbles  
Top Ten Toys  
Myrna and Donald Torrie  
Dave and Chris Towne  
Janet and Doug True  
Sarah Van Arsdale Cook  
and John Cook

Deborah Vosler  
Washington Department of Fish and Wildlife  
Victoria Wellman  
Linda Whitworth  
Kathryn Williams  
Stuart and Lucy Williams  
Cyndi Wolfe  
Anonymous (9)

### SUMATRA CLUB \$2,500+

The 5th Avenue Musical  
Theatre Company  
Albuquerque BioPark  
Alvin Goldfarb Jewelers  
Annie Alvord  
David S. Anderson  
Walker Aumann and Shannon Hillinger  
Barbara and Joseph Baer  
Ted Barham and Kristie Finelli  
Patty and Jimmy Barrier  
Howard and Lynn Behar  
Barbara and Clint Bennett  
Blank Park Zoo Foundation  
Bloomberg  
Susan and Brad Borgman  
Bobbe and Jonathan Bridge  
BridgeSpan  
Josh Brown  
Caliber Home Loans  
Susan and Robert Chamberlain  
JC and Scott Chupack  
Clif Bar & Company  
Andrea Copping and Alan Christie  
Mike and Kathy Cutler  
Greg and Jeanette Devey  
Sandy Dunn  
Julie Edsforth and Jabe Blumenthal  
El Gaucho  
ExxonMobil Foundation  
Ellen Ferguson  
Shalisan Foster  
Dana Frank  
Harmony Frazier and Michael Breen  
Serena and Neal Friedman  
Kim and Diane Garland  
Matthew and Glenda Gertz  
Catherine Gleason  
Andrew Grover  
Lucy Hart  
Health Resource Services, LLC / Amerinet  
Blaine and Jennifer Hirai  
Holly K. Hirai  
Mary Hogue  
Carol and Bruce Hosford  
Gretchen Howard and Jerry Williams  
IBM Corporation  
Valerie and Roger Jeglum  
Deborah Jensen and Steven Malloch  
Anne S. Knapp

KPMG LLP  
Steve Kutz and Courtney Womack  
Lane Powell PC  
Christopher and Alida Latham  
James and Jan Linardos  
Alan and Kimberley Lippman  
Harrison and Melissa Liu  
Macbeth Family  
Carl and Jennifer Mackleit  
Jay and Christy Meena  
Terry and Yukari Mihashi  
Mithun, Inc.  
T.R. Morris and Melissa Wolfstone  
Mary Mott  
O Wines  
Bob\* and Lynn Ormsby  
Mary Anne and Tim Osborn  
PCC Natural Markets  
Pelican Pub & Brewery  
Laura Peterson  
Michael and Wendy Popke  
Carol Proesel  
PSAV Presentation Services  
Rick and Monica Rasmussen  
Sarah Reid  
Annie and Driscoll Robbins  
Rohrbach Family  
Pete and Julie Rose  
Todd and Donna Rosenberg  
Evelyne Rozner and Matthew Griffin  
Estate of Dorlesca H. Ryan  
Heather and Michael Sandoval  
Rich and Alice Sasaki  
Howard Schultz and Sheri Kersch-Schultz  
Schwartz Brothers Restaurants  
Sedgwick County Zoo  
Elizabeth Sicktic and Douglas Barker  
Jim and Jan Sinegal  
Space Needle Corporation  
Star Rentals Inc.  
Iola Stetson  
Bryan and Amy Sullivan  
Kim and Del Swingle  
Mark Takagi and Connie Ricca  
Team Watkins Advertising & PR  
Beryl A. Thompson  
Patrick Tousignant  
Diane Trafton  
University of Washington  
James and Tracy Walker  
Gail Warren  
Kathie Watson  
Deborah and Bob Wilcox  
The Wild Center  
David E. Wilson and Joann G. Perrett  
Carol Windham  
Deanne Witt  
Stuart and Susan Young  
Zoo Miami  
ZooParc de Beauval  
Anonymous (2)





**SAFARI CLUB \$1,000+**

George and Shelly Ainsworth  
Robert Alama  
Aaron and Emily Alhadeff  
Kenneth and Marleen Alhadeff  
Rene Alkoff  
Thomas and Lorna Allen  
Allied Integrated Marketing  
Alligator Farm Zoological Park  
Christi and Andrew Allison  
Alstom Grid Inc.  
Constance Anderson  
and Justin Pava  
Phoebe and Lucius\* Andrew  
Rob Angel  
Dr. and Mrs. Hugh and  
Dollie Armstrong  
Joseph and Chris Aschbacher  
Robert and Clodagh Ash  
Attachmate  
AutoNation  
AZA Marsupial and Monotreme  
Taxon Advisory Group  
Pete and Karen Baccetti  
Sam Baker  
Cindy Ball and Tim Hunkapiller  
Jay and Sharon Ballantine  
Carter and Lynne Bannerman  
Deed Barrett-Chase and  
Michael Chase  
Beardsley Family Foundation  
Warren and MaryAnn  
Beardsley  
Glen and Susan Beebe  
Andrew Begun  
Sally Bellargeon  
Cindy and Mark Benezra  
Julie and Lisa Bennett  
Trevor Bennett  
Richard and Diane Bennion  
Laura Bentley

Dr. Gina Beretta and  
Bryan Senn  
Linda and George\* Berkman  
Eric and Luann Berman  
Marianne Bichsel  
Nancy Biglow  
Nathan Bingham and  
Michele Agosti  
Sarah Bishop and Geoff Shaw  
Michael and Sarah Blake  
John and Ann Blasko  
Scott Boehmer  
The Boehmer Family  
Karen Bohmke  
Barbara Bonjour  
Polly Bonnell  
Holly Bork  
Scott and Debbie Boyer  
Paul and Debbi Brainerd  
Randi and Joseph Brazen  
John and Julia Brewer  
Herbert M. Bridge and  
Edie Hilliard  
Edwin and Jean  
Brockenbrough  
Gary and Donna Brooks  
John Bruns and Carrie  
Zuther-Bruns  
Julie and William Buck  
Libby and Bill Buckley  
Burke Museum of Natural  
History & Culture  
Chris Burns  
Butler Valet  
Caffe Vita Coffee Roasting Co.  
Cantinetta Seattle  
Philip Carlo  
Ted Carstensen  
Kaye Cartwright-Lissa  
Justina Chen  
Clark Nuber

Kathie Claypool and  
Tom McManus  
Michele and William Coady  
Rebecca Costello  
Lester and Kimberly Craven  
Jan and Jack Creighton  
Jennifer Creighton  
Erik Cullen and  
Laurie Alexander  
Jennifer and Scott Cunningham  
Darigold  
Trent and Darci Dawson  
Justin and Delaney Dechant  
Alison DeGregorio and  
Kevin Donovan  
DeLille Cellars Inc  
Stuart N. DeSpain  
Patricia Devereux  
Katherine and Jeremy DeWitt  
Catherine and William Dickson  
Annette Dixon  
Patricia Donnellan  
Annemarie Dooley and  
Bob Richard  
East Bay Zoological Society  
Ernst & Young LLP  
Est Ovest Style  
Andrew Farrier  
Filson  
FORMA Construction  
Jane Foster  
Jean and Carolyn Fraley  
Angela and Kenneth Freeman  
Chris Freeman  
Fresh Northwest Design Inc.  
David and Andria Garten  
Gene Juarez Salons & Spas  
Janet George  
Scott and Vickie Gibbs  
Give With Liberty - Liberty  
Mutual Foundation Match

David and Lisa Goldberg  
Fredda and Steven Goldfarb  
Richard and Ginger Goldman  
Motive Group, Inc.  
Google  
Gordon's on Blueberry Hill  
John Gossman  
Graham Baba Architects  
Joshua Green III and  
Pamela Green  
Jennifer Greer  
Leah Hair  
Michael Halperin and  
Jodi Green  
Jason and Joey Hamlin  
Noelle and Mike Harman  
Adam and Helen Harmetz  
Debbie and Arley Harrell  
Harrison Berkman &  
Claypool PLLC  
Ted and Tara Hart  
Stefanie Henderson  
Jan Hendrickson and  
Chuck Leighton  
Herban Feast  
Joshua and Renee Herst  
Matt and Sarah Hill  
Alexis and David Hiniker-Roosa  
Elizabeth and Douglas Hofmann  
Peter and Theresa Hogenson  
J. Marilyn Holstad  
Stephanie and Jim Honan  
Honeywell  
Karyn Honigsfeld  
Katherine Huber  
Gretchen Hull  
Huntress & Haute  
Bill and Pam Hurst  
Marie K. Huwe  
Jo Anne Iacofano and  
Gary Caldwell  
Impressions Photography  
Jack Henry & Associates  
Joyce and J. Craig Jackson  
Linda Jacobs  
Jerry and Lois Photography  
Judith Jesiolowski and  
David Thompson  
Daniel Jiyamapa and  
Michelle Jack  
Linda and Theodore Johnson  
Jones Lang LaSalle, Inc.  
Lucas and Jamie Joppa  
JPMorgan Chase Foundation  
Barbara and Christopher Kaler  
Darlene Kenney  
KeyBank  
Kristine Kitayama and  
David Morton  
Wendy Kizzier  
Jacqueline and David Kramer  
Lyle and Suzanne Krapf  
Jeffrey Krauss  
Dyane and Tyler Kruse  
Lancer Hospitality  
Lucinda and Joseph Langjahr  
Timothy and Kathleen Leach  
Lease Crutcher Lewis

Kevin Lee and Christian Litle  
Shari and Rory Leid  
Harriette Leitman  
Letsgolnstyle  
Bill Lewis  
Ruth and Terry Lipscomb  
Julie Little  
Edmund and Laura Littlefield  
Live Nation Seattle/  
Cirque du Soleil  
LMN Architects  
Chris and Alison Lomaka  
Mary Anne Lord  
Matthew Loso  
Darinee Louvau  
Kristie Macris and  
Ricardo Ariza  
John E. Manders Foundation  
Marshall Family  
Dr. Thomas Martin  
and Laura Martin  
Keith Mayfield  
James W. and Brooke  
McCurdy  
Alma and Shawn McFarland  
MCG  
Suzanne and Thomas McGill  
Michael McGoldrick  
James and Janice McGraw  
Shannon McPhee  
John and Gail Mensher  
MetroPCS  
The Metropolitan Grill  
MG2  
Nicholas Michalski  
Milwaukee County Zoo  
Pamela and Donald Mitchell  
MKG  
Claudia Moberg-Butler  
and William Butler  
Hilary and Dan Mohr  
Kevin and Nicole Morris  
Charles and Alex Morse  
John Mueller  
National Geographic Society  
Larry and Rhonda Nelsen  
Nick Newcombe  
Robert Nielsen  
Nintendo of America  
Teresa and Clint Noonan  
Douglas and Nancy Norberg  
Pete and Brandy Nordstrom  
Gretchen Nott Gould  
Judy Nyman-Schaaf  
Aileen O'Connell and  
Mike Parsley  
Ashley O'Connor McCready  
and Mike McCready  
Kim Ortiz  
Pacific Market International  
John Parchem and  
Barbara Lycett  
Jodi Parente and  
Rodell Notbohm  
Lisa Parkinson  
John F. and Betty A. Parks  
Valerie and Jerry Parrish  
Janet and William Pauli

“Patti Savoy’s passion and vision for WPZ as a conservation platform to save tigers is contagious. A true believer in the power of women, she mobilized us to help the zoo think bigger and better, and to engage people far and wide for the Northwest’s wildest summer event, Jungly Party. It had a louder roar than ever before, raising \$2+ million for the zoo’s mission – a record.”

Jungle Party 2015 Co-chairs Sheila Otter, Shalisan Foster, Deborah Anderson, Dana Frank, Cindy Benezra, Susan Krapp, Stacy Lill, Fredda Goldfarb, Stacy Jones, and Nicole Knowles (Patti Savoy, Executive Co-chair, is pictured center with her team.)



Jeffery Everson / Eversonian Photography

PCL Construction  
Angela and Owen Pearson  
Debra and Mark Perry  
Kathleen and Jim Phillips  
Sarah Phillips  
Kelly and Cheryl Pleas  
Celeste and Steven Powell  
Precept Wine  
John and Krista Prescott  
Donald and Darcy Price  
Mary Price  
PrintWest, Inc.  
Steven and Gloria Pumphrey  
Pyramid Communications  
Radius Inc  
Brooks and Suzanne Ragen  
James and Sherry Raisbeck  
Dave and Erin Raney  
Ray's Boathouse,  
Cafe and Catering  
Grant and Katherine Reis  
Brian and Songhee Reistad  
Pamela Reynolds  
Carrie Rhodes  
George Rhodes and  
Keri Nielsen  
Kathryn and Charles Richmond  
Sharon Ricketts  
Rebecca and Richard Ripley  
Brady Robb  
Patricia Roberts and  
Richard Nguyen  
George and Mary Robertson  
Scott G. Robinson  
Marcia and Ross Rogers  
Mark Rosencrantz and  
Michelle Byun  
Michelle and John Rosenthal  
Dan and Heather Roulo  
Daryl and Mark Russinovich  
Andrew and Emily Ryan  
Danielle and Hani Saliba  
Al Salm  
Santa Fe College Foundation, Inc.  
Michael Santiago and  
Hengqi Zheng  
C + L Scanduzzi

Peter Schaefer  
Laurie and John Schmertz  
Morton and Kiku Schmorleit  
Schuchart  
Jarrod Seaton  
Seattle City Light  
Seattle Foundation  
Seattle Parks and Recreation  
James and Marsha Seeley  
Casey and Maria Shearer  
Eric and Janelle Shuey  
Shanda and Anthony  
Shumpert  
Taryl and David Shupe  
Noreen and Lance Smith  
Socially Savvy  
SONNY's The CarWash  
Factory  
Spark Charitable Foundation  
Springfree Trampoline USA  
Derek and Stephanie Standifer  
Studio Hanson|Roberts  
Dean and Audrey Stupke  
Audrienne Takagi  
Tampa Bay American  
Association of Zoo Keepers  
Cheryl Taylor  
Nick and Kelly Taylor  
Tetra Tech, Inc.  
Jennifer Thill and Derrick Rose  
C. Rhea and Wendy Thompson  
Rohan Tiwari  
The Toledo Zoo  
Bob and Shelley Tomberg  
Toronto Zoo  
Pam and Michael Towers  
John and Anne Trench  
Umpqua Bank  
Urban Soule  
Julie and Douglas Uyeda  
Veraci Pizza & Catering, Inc.  
Versatile Arts  
Maggie and Doug\* Walker  
Marisa Walker  
Heather Warncke and  
Adrienne Chew  
KrisAnne Warren

Washington State University  
Steven and Stephanie Wasson  
Tamara Watts and Paul Mobley  
Julie Webster  
Thomas Weeks and  
Deborah Oyer  
West River Group  
Amy Westlake and  
Seth Tupper  
Alan and Gigi White  
Diana and Stephen White  
Lloyd and Judith Wiebe  
Peter Wieland  
Rosalind and Ron Williams  
Peter Wilson  
Drew Wolff and  
Noelle Cooper  
David Wu and Dick Hansen  
Ann P. Wyckoff  
Catherine Wyckoff  
Wyman Youth Trust  
Brady Yeager  
Kink-Yue Yeung and  
Trinity Ng-Yeung  
Shauna and David Youssefnia  
Karma Zaike  
Anonymous (7)

**SAVANNA CLUB \$500+**

Ist Security Bank of  
Washington  
Yumi Abei and Gary Roberts  
Adobe Systems, Inc.  
ADP  
The Adventure Hub & Winery  
Haylen and Keith Alger  
Valerie and Glenn Alger  
Mike and Patty Allen  
Daniel Amdur  
Sally and Bart Amey  
Analytics Pros, Inc  
Eric and Erin Anderson  
Geoff Anderson and  
Laura Gilbert  
Peter and Margaret Anker  
Matthew and Maja Arnold  
Eileen and Rick Askew

Ray and Edith Aspiri  
Carolyn and Randall Aull  
Richard and Patricia Austin  
J. Brett Baba  
Annie Bai  
William and Nancy Bain  
Ballard Oil Co.  
Sally Barns  
Dan and Jaycee Barrett  
Batch 206 Distillery  
Kristine and Stanley Baty  
Michael Bauer  
Nick and Ashley Bay  
Melissa and Dan Becker  
Steve Bell and Kiersta Smith  
Heidi and Russell Bennett  
Jim and Janet Bennett  
Deirdre and Fraser Black  
Barbara Blair  
Blends  
Teresa Bliss  
Lee Boeckstiegel and  
Kelly Straight  
Steve and Kyle Bogard  
Gary and Diane Boman  
Doug and Tanya Bond  
Niranjan Bose and Lea Fields  
Elisabeth Bottler  
Stacy Bouska  
Janet Bower and  
Kenneth Martay  
Diane Bowers  
William Boyer  
Quentin Bracken  
Kathleen and Paul Bradley  
Kelley and Heidi Branch  
The Brik  
Jennie and Tyler Brixey  
Lisa Brummel and  
Celeste Keaton  
Lori and Steven Buchsbaum  
William and Judy Burdin  
DeeAnn and David Burman  
Adrienne and Apolonio  
Buyagawan  
Lacey and David Byers  
Richard and Karlyn Byham

Evan and Lisa Cacka  
Jessica and Clinton Campbell  
Ken Camper  
Capelli's Gentlemen's  
Barbershop  
Cardinale Estate  
Career Artist Management  
Cory Carlson and  
Rhoda Altom  
Trish and Collin Carpenter  
Alexia Carroll  
Caruh Salon and Spa  
CDK Global  
Cedarbrook Lodge I  
Copperleaf Restaurant  
Center for Continuing  
Education in Rehabilitation  
Jo Chatalas  
Chateau Ste. Michelle  
Darin and Lisa Chestnut  
Lorna and Andrew Chin  
Chocolate Box  
Mark Christiansen  
Keith Clark and Reah DePriest  
Kelly and James Clark  
Norma Cole and  
Tom McCarthy  
Rosemary J. Coleman and  
Davis B. Fox  
Janice Coogan  
Crawford Electric LLC  
C.C. and Bill Crenshaw  
R. Michael Crill and  
Catherine Nobis  
Caren Crockett  
Barbee and Jim Crutcher  
Carrie Culp and  
Don Anderson  
Kris and Joshua Curtis  
Lisa Dabek  
Tom Darden and Ellen Wallach  
Celeste DaVault  
Bob and Molly Davidson  
Crystal Davis  
Dr. Greg and Anne Davis  
D/B Solutions  
Julia de Haan



Denim Dow, WPZ



Dino and Caren De Vita  
 Hannah DeBerg and Daniel Vandervelde  
 Michele DeMaris  
 Tammara and William Dempsey  
 Alban Dennis and Julie Burgess-Dennis  
 Jessica Dewell  
 Diane and John DeYoung  
 Diiley Studios  
 Lisa Dingwall  
 DM Athletics  
 Joanie Dorsey  
 Chris Doucet and Ben Bouchard  
 Dan and Sheila Duke  
 Judith Dunn Lee and John Lee  
 Karen Duval and Cherie Duval-White  
 Kathy and George Edwards  
 Kristin and Robert Eick  
 Christine and Gerald Ervine  
 Walter Euyang and Susan Lammers  
 Event Network  
 Eversonian Visual Design  
 James and Ann Ewel  
 Chris and Lori Fallon  
 Leslie Feinzaig  
 Sheri and Shawn Ferguson  
 Fildar Technologies  
 Charles and Rose Ann Finkel  
 Donald Fleming and Elizabeth Hanna  
 Linda Fogarty and Dale Thompson  
 Michael Ford  
 Joanne Foster  
 Janet and Lloyd Frink  
 Full Sail Brewing

Gabbert Family  
 Raymond and Nicolette Gagner  
 Christy and Travis Gagnier  
 Christine and Steven Gerdes  
 Ian Gienger  
 Girl Scout Troop #42326  
 Olive Goh and Erik Dugger  
 Jeffrey Goldstein and Jaclyn Roberts  
 Susan Golub and Paddy Freeman  
 Lauren and Ryan Grammer  
 Rebecca and James Grandin  
 Ryan Grantier and Katie Thomas  
 John Gray and Jeanne Eagleson  
 Marilyn Gray  
 Great American Insurance Group  
 Greater Kansas City American Assn. of Zoo Keepers  
 Martinique and Eliot Grigg  
 Alexandre Grigorovitch  
 Patricia Gudrian-Crawford and Tobias Crawford  
 Madeleine Hagen  
 Mark Hamburg  
 Rosaline and Joe Hampton  
 Wiley and Pamela Hampton  
 Jane Harron and Stefan Sievert  
 John and Janet Harville  
 Patricia and Bradford Hastings  
 Mark and Maria Hatcher  
 Jeff Hazeltine and Alicechandra Fritz  
 Toni and Bart Heath  
 Susan and Richard Hecht  
 Richard and Elizabeth Hedreen  
 Jill and Michael Heijer  
 Constance Hellyer and Frank Little

Chris Henry  
 William Henry  
 Robert Herring  
 James and June Hill  
 Michael and Judi Hoffman  
 H.O.M.E.  
 Patricia and Stephen Hopps  
 David Horowitz  
 Hotel Nexus  
 Jeanne and Fred Howard  
 HTHS Friends of the Pellegrinos/HTHS Friends of Anne Knapp  
 Bre Huston  
 In Concert with Good  
 Inn at the Market  
 Interior Imagescapes  
 Mary and Kim Ireland  
 Barbara Jaech  
 Sharon Jakkola-Rust and Stan Rust  
 Liz James  
 Jamie Joseph Jewelry  
 Reija Jantti  
 Ellen Jewett  
 Becky Johnson  
 Brian and Janet Johnson  
 Paul Johnson and Jeanne Yu  
 Cassandra and Tom Johnston  
 Gary Justiss and Monica Williams  
 AJ Kamra  
 KAPS Radio 660 AM / KBRC Radio 1430 AM  
 Sarah and Chris Kavanaugh  
 Catherine Kayser and Ron Stanger  
 Keller Rohrback L.L.P.  
 Diane Kero  
 Elizabeth and William Ketcham  
 Lisa Kilders

KING 5  
 Virginia King  
 Kameron and Julie Kirkevold  
 Sheldon and Brittany Kitts  
 Douglas and Willeen Klan  
 Jim and Renee Klein  
 Cindy and Terry Klett  
 Michele and Lonnie Kosher  
 David Kraus  
 Heidi Krauer and Randy Coutu  
 Krekow Jennings, Inc.  
 Valerie Krueger and Rob Stahnke  
 KuKuRuZa Gourmet Popcorn  
 Rahul Kumar and Vasundhara Jain  
 Peter and Jane Lamb  
 I. Lao  
 Linda Larson  
 Christina and Todd Leber  
 Sujii Lee  
 Tiffany Lee  
 Barbara Lees  
 Margaret Lemberg and Denise Ottoson  
 Francesca Leonetti  
 Carol Leppa and Connie Miller  
 Ross and Mary Jo Leventhal  
 Carla and Don Lewis  
 Jane Lewis  
 Arneta Libby  
 Tiffany Lindan  
 Benjamin and Jennifer Linder  
 Lex Lindsey and Lynn Manley  
 Benjamin and Donna Lipsky  
 Andy and Laura Livingston  
 Anne Loomis Thompson and Ethan Thompson  
 Jennifer and John Loy  
 Lucia Italian Kitchen + Bar - Greenlake

Maureen and Philip Lucido  
 Donald MacDonald and Irene Vanden Brink  
 Sheldon and Brittany Kitts  
 Douglas and Willeen Klan  
 Jim and Renee Klein  
 Cindy and Terry Klett  
 Michele and Lonnie Kosher  
 David Kraus  
 Heidi Krauer and Randy Coutu  
 Krekow Jennings, Inc.  
 Valerie Krueger and Rob Stahnke  
 KuKuRuZa Gourmet Popcorn  
 Rahul Kumar and Vasundhara Jain  
 Peter and Jane Lamb  
 I. Lao  
 Linda Larson  
 Christina and Todd Leber  
 Sujii Lee  
 Tiffany Lee  
 Barbara Lees  
 Margaret Lemberg and Denise Ottoson  
 Francesca Leonetti  
 Carol Leppa and Connie Miller  
 Ross and Mary Jo Leventhal  
 Carla and Don Lewis  
 Jane Lewis  
 Arneta Libby  
 Tiffany Lindan  
 Benjamin and Jennifer Linder  
 Lex Lindsey and Lynn Manley  
 Benjamin and Donna Lipsky  
 Andy and Laura Livingston  
 Anne Loomis Thompson and Ethan Thompson  
 Jennifer and John Loy  
 Lucia Italian Kitchen + Bar - Greenlake  
 Michael and Patti Meyers

Maureen and Philip Lucido  
 Donald MacDonald and Irene Vanden Brink  
 Sheldon and Brittany Kitts  
 Douglas and Willeen Klan  
 Jim and Renee Klein  
 Cindy and Terry Klett  
 Michele and Lonnie Kosher  
 David Kraus  
 Heidi Krauer and Randy Coutu  
 Krekow Jennings, Inc.  
 Valerie Krueger and Rob Stahnke  
 KuKuRuZa Gourmet Popcorn  
 Rahul Kumar and Vasundhara Jain  
 Peter and Jane Lamb  
 I. Lao  
 Linda Larson  
 Christina and Todd Leber  
 Sujii Lee  
 Tiffany Lee  
 Barbara Lees  
 Margaret Lemberg and Denise Ottoson  
 Francesca Leonetti  
 Carol Leppa and Connie Miller  
 Ross and Mary Jo Leventhal  
 Carla and Don Lewis  
 Jane Lewis  
 Arneta Libby  
 Tiffany Lindan  
 Benjamin and Jennifer Linder  
 Lex Lindsey and Lynn Manley  
 Benjamin and Donna Lipsky  
 Andy and Laura Livingston  
 Anne Loomis Thompson and Ethan Thompson  
 Jennifer and John Loy  
 Lucia Italian Kitchen + Bar - Greenlake  
 Michael and Patti Meyers

Maureen and Philip Lucido  
 Donald MacDonald and Irene Vanden Brink  
 Sheldon and Brittany Kitts  
 Douglas and Willeen Klan  
 Jim and Renee Klein  
 Cindy and Terry Klett  
 Michele and Lonnie Kosher  
 David Kraus  
 Heidi Krauer and Randy Coutu  
 Krekow Jennings, Inc.  
 Valerie Krueger and Rob Stahnke  
 KuKuRuZa Gourmet Popcorn  
 Rahul Kumar and Vasundhara Jain  
 Peter and Jane Lamb  
 I. Lao  
 Linda Larson  
 Christina and Todd Leber  
 Sujii Lee  
 Tiffany Lee  
 Barbara Lees  
 Margaret Lemberg and Denise Ottoson  
 Francesca Leonetti  
 Carol Leppa and Connie Miller  
 Ross and Mary Jo Leventhal  
 Carla and Don Lewis  
 Jane Lewis  
 Arneta Libby  
 Tiffany Lindan  
 Benjamin and Jennifer Linder  
 Lex Lindsey and Lynn Manley  
 Benjamin and Donna Lipsky  
 Andy and Laura Livingston  
 Anne Loomis Thompson and Ethan Thompson  
 Jennifer and John Loy  
 Lucia Italian Kitchen + Bar - Greenlake  
 Michael and Patti Meyers

Maureen and Philip Lucido  
 Donald MacDonald and Irene Vanden Brink  
 Sheldon and Brittany Kitts  
 Douglas and Willeen Klan  
 Jim and Renee Klein  
 Cindy and Terry Klett  
 Michele and Lonnie Kosher  
 David Kraus  
 Heidi Krauer and Randy Coutu  
 Krekow Jennings, Inc.  
 Valerie Krueger and Rob Stahnke  
 KuKuRuZa Gourmet Popcorn  
 Rahul Kumar and Vasundhara Jain  
 Peter and Jane Lamb  
 I. Lao  
 Linda Larson  
 Christina and Todd Leber  
 Sujii Lee  
 Tiffany Lee  
 Barbara Lees  
 Margaret Lemberg and Denise Ottoson  
 Francesca Leonetti  
 Carol Leppa and Connie Miller  
 Ross and Mary Jo Leventhal  
 Carla and Don Lewis  
 Jane Lewis  
 Arneta Libby  
 Tiffany Lindan  
 Benjamin and Jennifer Linder  
 Lex Lindsey and Lynn Manley  
 Benjamin and Donna Lipsky  
 Andy and Laura Livingston  
 Anne Loomis Thompson and Ethan Thompson  
 Jennifer and John Loy  
 Lucia Italian Kitchen + Bar - Greenlake  
 Michael and Patti Meyers

Maureen and Philip Lucido  
 Donald MacDonald and Irene Vanden Brink  
 Sheldon and Brittany Kitts  
 Douglas and Willeen Klan  
 Jim and Renee Klein  
 Cindy and Terry Klett  
 Michele and Lonnie Kosher  
 David Kraus  
 Heidi Krauer and Randy Coutu  
 Krekow Jennings, Inc.  
 Valerie Krueger and Rob Stahnke  
 KuKuRuZa Gourmet Popcorn  
 Rahul Kumar and Vasundhara Jain  
 Peter and Jane Lamb  
 I. Lao  
 Linda Larson  
 Christina and Todd Leber  
 Sujii Lee  
 Tiffany Lee  
 Barbara Lees  
 Margaret Lemberg and Denise Ottoson  
 Francesca Leonetti  
 Carol Leppa and Connie Miller  
 Ross and Mary Jo Leventhal  
 Carla and Don Lewis  
 Jane Lewis  
 Arneta Libby  
 Tiffany Lindan  
 Benjamin and Jennifer Linder  
 Lex Lindsey and Lynn Manley  
 Benjamin and Donna Lipsky  
 Andy and Laura Livingston  
 Anne Loomis Thompson and Ethan Thompson  
 Jennifer and John Loy  
 Lucia Italian Kitchen + Bar - Greenlake  
 Michael and Patti Meyers

Maureen and Philip Lucido  
 Donald MacDonald and Irene Vanden Brink  
 Sheldon and Brittany Kitts  
 Douglas and Willeen Klan  
 Jim and Renee Klein  
 Cindy and Terry Klett  
 Michele and Lonnie Kosher  
 David Kraus  
 Heidi Krauer and Randy Coutu  
 Krekow Jennings, Inc.  
 Valerie Krueger and Rob Stahnke  
 KuKuRuZa Gourmet Popcorn  
 Rahul Kumar and Vasundhara Jain  
 Peter and Jane Lamb  
 I. Lao  
 Linda Larson  
 Christina and Todd Leber  
 Sujii Lee  
 Tiffany Lee  
 Barbara Lees  
 Margaret Lemberg and Denise Ottoson  
 Francesca Leonetti  
 Carol Leppa and Connie Miller  
 Ross and Mary Jo Leventhal  
 Carla and Don Lewis  
 Jane Lewis  
 Arneta Libby  
 Tiffany Lindan  
 Benjamin and Jennifer Linder  
 Lex Lindsey and Lynn Manley  
 Benjamin and Donna Lipsky  
 Andy and Laura Livingston  
 Anne Loomis Thompson and Ethan Thompson  
 Jennifer and John Loy  
 Lucia Italian Kitchen + Bar - Greenlake  
 Michael and Patti Meyers

Maureen and Philip Lucido  
 Donald MacDonald and Irene Vanden Brink  
 Sheldon and Brittany Kitts  
 Douglas and Willeen Klan  
 Jim and Renee Klein  
 Cindy and Terry Klett  
 Michele and Lonnie Kosher  
 David Kraus  
 Heidi Krauer and Randy Coutu  
 Krekow Jennings, Inc.  
 Valerie Krueger and Rob Stahnke  
 KuKuRuZa Gourmet Popcorn  
 Rahul Kumar and Vasundhara Jain  
 Peter and Jane Lamb  
 I. Lao  
 Linda Larson  
 Christina and Todd Leber  
 Sujii Lee  
 Tiffany Lee  
 Barbara Lees  
 Margaret Lemberg and Denise Ottoson  
 Francesca Leonetti  
 Carol Leppa and Connie Miller  
 Ross and Mary Jo Leventhal  
 Carla and Don Lewis  
 Jane Lewis  
 Arneta Libby  
 Tiffany Lindan  
 Benjamin and Jennifer Linder  
 Lex Lindsey and Lynn Manley  
 Benjamin and Donna Lipsky  
 Andy and Laura Livingston  
 Anne Loomis Thompson and Ethan Thompson  
 Jennifer and John Loy  
 Lucia Italian Kitchen + Bar - Greenlake  
 Michael and Patti Meyers

“By removing the barriers to access for quality child growth and development, WPZ’s Family Nature Club builds a foundation for learning about nature and science skills that kids share in their community and throughout life. As a parent of young children, I know how important it is to expose kids to animals and the natural world, something that many might never otherwise experience were it not for our zoo.”

Sara Raab McInerney, Executive Director, Norman Raab Foundation



Ryan Hawk, WPZ



Karen McRea, WPZ

“When my friend Ty and I visited WPZ last year, the warty pigs really tugged at our hearts. Inspired to learn more when we got home, we found out that warty pigs were critically endangered. We wanted to take action to help! With “Save Warty Pigs” signs and t-shirts, we spoke at our school and sold bottled water to runners in our hometown! I even asked friends to donate instead of giving me birthday presents. We raised \$930! I hope to join ZooCorps to explore careers in science and conservation. That first zoo visit really moved me to care about saving critically endangered animals!”

Jack Wilken, age 11, Vancouver, BC, Canada

\*Deceased







Dennis Dow, WPZ



Dennis Dow, WPZ



Jeremy Dwyer-Lindgren, WPZ

# ZOOKEEPERS SOCIETY

Thank you for building a generous legacy! The vision and lifetime contributions of members of our ZooKeepers Society sustain our zoo's world-class programs and its leadership in education and conservation – today, tomorrow, and well into the future.

**\$10,000,000+**  
People of the City of Seattle  
People of King County  
Anonymous (1)

**\$5,000,000+**  
The Boeing Company  
Conservation International  
Bill & Melinda Gates Foundation  
Microsoft Corporation

**\$1,000,000+**  
Estate of Millie Albee  
Linda and Tom Allen Family  
The Paul G. Allen Family Foundation  
Rick and Nancy Alvord Family  
BANK OF AMERICA  
Bezos Family Foundation  
Brown Bear Car Wash and The Victor Odermat Family Chase  
Cole & Weber  
Hugh and Jane Ferguson Foundation  
Kreielshimer Foundation  
Estate of Helen and Allen Mull  
M.J. Murdock Charitable Trust  
Inger and Allan Osberg  
Estate of Dorlesca H. Ryan  
Charles and Lisa Simonyi Fund for Arts and Sciences  
The True Family  
Anonymous (3)

**\$500,000+**  
Alaska Airlines  
Apex Foundation  
BECU  
Estate of Richard G. Buckley  
Joshua Green Foundation  
John C. and Karyl Kay Hughes Foundation  
The Jacobsen Family  
Estate of Lucille J. Johnston  
Kresge Foundation  
Frank R. Lunetti  
John and Deanna  
Oppenheimer Family  
PACCAR  
Safeco Insurance  
Barbara Sando  
Seattle Foundation  
Seattle Rotary Service  
Foundation  
U.S. BANK  
Maggie, Doug\* and Kina Walker  
Coralyn Whitney and Dwight Gadd  
Anonymous (1)

**\$100,000+**  
Adventures of Riley (TM)  
Alaska Distributors  
Chap and Eve Alvord  
Elias and Karyl Alvord  
Nancy and Buster Alvord  
ARAMARK Corporation  
Stuart and Susan Ashmun

Attachmate Corporation  
AVMS  
Alta and Stan Barer  
Bartell Drugs  
Dan and Jill Becker  
Ben Bridge Jeweler  
The Bezos Family  
Z. William and Hilde M. Birnbaum Endowment Fund  
BNY Mellon Wealth Management  
Estate of Kathryn A. Bomer Pope  
Bob and Bobbi Bridge  
T. Bradford and Lesley Canfield  
Lisa and Mark Caputo  
Carter Motors Inc  
Chevron Corporation  
Ruth E. Collins  
Columbia Distributing  
Columbus Zoo and Aquarium  
Jan and Jack Creighton  
Estate of Lorene E. Currier  
Estate of Patricia Cutchlow  
Deloitte  
Delta Dental of Washington  
Estate of Victor Denny  
Kenneth and Pamela Eakes Family  
Patty Edwards  
Estate of Ruth Ellerbeck  
Estate of Helen I. Elstad  
The Enell Family  
Estate of Erma Irene Etue

Evergreen Point Foundation  
Estate of Anne P. Frame  
Georgia Gerber and Randy Hudson  
Leona M. Geyer Trust  
Wayne\* and Anne Gittinger  
Irwin and Joan Goverman  
Joan Gray and Harris Hoffman  
Estate of Elaine Green Eldridge  
Jerry and Lyn Grinstein  
Group Health Cooperative of Puget Sound  
Grousemont Foundation  
Gull Industries  
Mike Halperin and Jodi Green  
Rosemarie Havranek and Nathan Myhrvold  
William Randolph Hearst Foundation  
Jan Hendrickson  
Paul Hogle and Karen Malen-Hogle  
Mary Hogue and Family  
Holland America Line  
HomeStreet Bank  
Robert and Debora Horvath Family  
Howard Hughes Medical Institute  
Marvin and Patricia Hurtgen  
Institute of Museum and Library Services  
Estate of Virginia W. Iverson  
Gerry Johnson and Linda Larson  
Floyd and Delores Jones Family Foundation  
K&L Gates LLP  
Glenn Kawasaki  
Paul and Vera Keating Family Trust  
Sharon and Duff Kennedy  
KeyBank  
Karen L. Koon  
The Kunis Foundation  
James M. Kunz

Jim and Jean Kunz  
The Kwapil Family  
Patty and Jonathan Lazarus and Family  
The Leslie Fund  
Cammi Libby  
Marti and Rob Liddell  
Steve Liffick, Rasa Raisys, and Family  
Byron W. and Alice L. Lockwood Foundation  
Macy's  
Estate of Joseph and Vivian McCann  
Keith & Mary Kay McCaw Family Foundation  
D.V. & Ida J. McEachern Charitable Trust  
Metropolitan Market  
Alexandra and Charles Morse  
Estate of Bernard J. Nist and Claudine S. Nist  
Northern Trust  
Sandra and Phil Nudelman  
Brad and Kathy Nysether  
Mark and Vickie Nysether  
Shirley and Eldon Nysether  
The Nysether Family Foundation  
Robert\* and Lynn Ormsby Family  
Valerie and Jerry Parrish Family  
Keith\* and Janet Patrick  
PCC Natural Markets  
Nancy and Mark Pellegrino  
Pepsi Beverages Company  
Jim and Gaye Pigott  
Robert Plotnick and Gay Lee Jensen  
Cam and Tori Ragen Family  
Ray's Boathouse, Café & Catering  
Roger Williams Park Zoo  
Patti Savoy

Helen E. and Florence B. Schenk Endowed Fund  
The Schofield Family  
Seattle City Light  
Seattle Seahawks  
The Seattle Times  
Shared Earth Foundation  
Rob Short and Emer Dooley  
Robert and Diane Shrewsbury II and Family  
Kenneth R. Sinibaldi, DVM  
Snoqualmie Tribe  
SOS-Save Our Species  
Sound Community Bank  
Estate of Joy Spurr  
Trudy\* and Harold Stack  
Laurie Stewart  
Althea and Sam Stroum\*  
The Tagny-Jones Family Fund at The Seattle Foundation  
Dave and Chris Towne  
Unico Investment Company  
Union Bank  
United Guaranty Corporation  
U.S. Department of Agriculture  
Forest Service  
Jill and Scott Walker  
Estate of Levant Fredrick Wellington  
Howard L.\* and Victoria L. Wellman  
Wells Fargo  
Margie Wetherald and Len Barson  
Estate of Mertice C. Wilcox  
The Dean Witter Foundation  
The Wockner Foundation  
David and Sally Wright  
WRQ  
Paul Wyckoff  
Susie Wyckoff  
WYCO Fund  
Anonymous (13)

\*Deceased

**Additional Generous Supporters**  
Ancient Order of United Workmen Evergreen Lodge No. 2  
Ballmer Family Giving  
Anthony and Lillian Bay Family  
Donna Benaroya  
Mylo\* and Marion Charlston  
Kathie Claypool and Tom McManus  
The Coca-Cola Bottling Company of Washington  
William\* and Sandy Dunn  
Katharyn Gerlich  
Nick and Leslie Hanauer  
Dr. Nick and DeEtte Johnson  
Juniper Foundation  
Jeff and Robin Leppo Family  
Bill Lewis  
McKinstry  
Pendleton & Elisabeth Miller Charitable Foundation  
Larry and Rhonda Nelsen  
The Norcliffe Foundation  
Ginny and Michael Pigott Family  
Mark Pigott Family  
Puget Sound Energy  
James W. Ray  
Seattle Public Utilities  
Dale and Carol Sperling Family  
Estate of John S. Tilner  
Rogers and Julie Weed  
Wilburforce  
Kathryn Williams  
Stuart, Lucy, Charlie, Peter and Boo Williams  
Ben and Julie Wolff  
WONGDOODY  
WWW Foundation

“Not everyone can go to the frontlines of conservation in Africa or Asia to see and protect big cats. But everyone can go to the zoo, get involved, and support its hands-on work to save animals in the wild. That’s why I love coming to the zoo as much as any 10 year old. It’s a fun family day that also connects, me personally to the important, global work of saving endangered wildlife.”

Patty Edwards, Woodland Park Zoo supporter and lover of all cats



# LIONHEARTS SOCIETY

Thank you for YOUR continued support!

These generous donors have recognized the zoo in their estate plans, ensuring that our mission continues to have a positive impact well into the future.

Ms. Anna L. (Birdie) Adams  
Steve Averill  
Michael Bauer  
Donna Benaroya  
Linda and George\* Berkman  
Dominique Bideau  
Florence Bliss  
Mark Blitzler  
Barbara L. Borylla\*  
Cathy Breen  
Val and Lucille Cedarland  
Mylo\* and Marion Charlston  
Kathie Claypool and Tom McManus  
John and Patricia Clearman  
Dr. Natalie C. Coleman  
Michael and Charlotte Conwell  
Carol Crawford  
Michael and Gale Davis  
Marla and Terrell Deere  
Peter N. Dorsette  
Barry and Sandi Doust  
Janet and Joel Dugan  
Patty Edwards  
Carolyn Enloe  
Jeanne and Jack Fankhauser  
Jean Feagin  
Christina Federlein  
Allison Feher  
Ray Goforth Jr.  
Herbert Goldman and Erika Herfindahl  
Ronald and Cathy Grant  
Elizabeth and Kenn Gray  
Julianna and Eric Griffin  
Keith and Antje Gunnar  
Madeleine Roberts Hagen  
Rodney, Deborah and Roman Hagge  
Cathie Hamilton  
Maureen and John Harley  
Crystal Hayes  
Jan Hendrickson  
Charles and Colleen Holbrook

J. Marilyn Holstad  
William Holt  
Marion W. Hopkins  
Gretchen Howard and Jerry Williams  
Cynthia A. Howell  
Robert and Luella Hull  
Kathleen Ihnken  
Ardie and Jerry Johnson  
Thomas Jordan and Kelly Jordan  
Lilly A. Kassos  
Ethel King  
Joan King  
Mr. and Mrs. Kurt Kleemann  
Larry Knudsen  
Douglas Koss  
Gary Kunis  
Jim and Jean Kunz  
Frances Kwapil  
Mary and Tim Lawrence  
Patty and Jonathan Lazarus  
Kathy and Carl Leon  
Bill Lewis  
Melinda Mackey-O'Brien and Tim O'Brien  
Judsen Marquardt  
Betty and Linda Marshall  
The Jim and Cindy Maxwell Family  
Dennis McCleerey  
James and Janice McGraw  
Richard and Julianne McLean  
Michael McNamara  
Michael M. and Marilyn McQuaid  
Ingrid and Scott Mealer  
Rose Mehan  
Lynn G. Meyer  
David and Dorene Miller  
Helen Mull\*  
Trisha and Eric Muller  
Margaret Nason  
Ken and Vicki Neiman  
Larry and Rhonda Nelsen  
Sandra and Phil Nudelman

Judy Nyman-Schaaf  
Robert\* and Lynn Ormsby  
John F. and Betty A. Parks  
Sam and Susan Patton  
Marla Hamilton Peele  
Nancy and Mark Pellegrino  
Carol Proesel  
Linda Quirk  
Cameron and Tori Ragen  
Ted and Barbara Rothstein  
Barbara Sando  
Patti Savoy  
Anne and John Searing  
Mary Sexton  
George and Darcy Siepak  
Kenneth Sinibaldi  
Marian C. Spath  
Diane Spaulding  
Kenmour Spencer  
Ritee Sponsler  
Jordan Sterling  
Laurie Stewart  
Rosanne Stukel  
Christine Sydneysmith  
R. Jay Tejera  
Beryl A. Thompson  
Jean F. Thompson  
Myrna and Don Torrie  
Dave and Chris Towne  
Mary Ann and Steven Urlacher  
Sharon Ann Uluwehi Vaughn  
Mr. and Mrs. Paul Vogt  
Jill and Scott Walker  
Mike Waller and Kate Grieshaber  
Julie Webster  
Elaine and Doug Weisfield  
Victoria L. Wellman  
Allan Ray Wenzel  
Margie Wetherald and Len Barson  
Coralyn W. Whitney  
Norma Wigutoff  
Anonymous (28)

\*Deceased

# CORPORATE SPONSORS

The Adventure Hub & Winery  
Alaska Airlines  
Allied Integrated Marketing  
BECU  
The Boeing Company  
BridgeSpan  
Brown Bear Car Wash  
Carter Subaru  
Chevron Corporation  
Cirque du Soleil Kurios  
Clif Bar & Company  
Columbia Bank  
Columbia Distributing  
Costco Wholesale

Darigold  
Deloitte  
Delta Dental of Washington  
FORMA Construction  
Fred Meyer  
GoGo squeeZ  
Goodness Knows  
Graham Baba Architects  
HomeStreet Bank  
In Concert with Good  
Iron Springs Resort  
Jones Lang LaSalle, Inc.  
Kibble & Prentice Inc.  
KIND Snacks

KuKuRuZa Gourmet Popcorn  
Lane Powell PC  
Lease Crutcher Lewis  
LMN Architects  
Mithun, Inc.  
Moss Adams LLP  
NBBJ  
Northern Trust  
PCC Natural Markets  
PCL Construction  
Pepsi Beverages Company  
QFC  
Raymond James Wealth Management Solutions

Regence BlueShield  
Schuchart  
Smith Brothers Farms  
Sound Community Bank  
Sound Credit Union  
Springfree Trampoline USA  
Starbucks Coffee Company  
Staybridge Suites Seattle - Fremont  
Studio Hanson|Roberts  
Team Watkins Advertising & PR  
Umpqua Oatmeal  
Union Bank  
U.S. BANK

# GIFTS IN HONOR OF

Shelly Ainsworth  
Debbie Armstrong  
Elizabeth Balle  
Ella Bischoff  
Bruce Bohmke  
Natalie Bomstead  
Kristi Branch  
Blair Brooks and Nancy Philips  
Nancy and Brian Busey  
Pat Butler  
Lorna Chin  
Nathan Christopher  
Eleanor Clarke (3)  
Reuben Clements  
Dr. Darin Collins  
Sue Connell  
Davis and Jake

Susan Duren  
Paul and Evelyn Farrier  
Brock Ferguson  
Riley Hartjes  
Pete Hayes  
Pandora House  
Jaxson Hummer  
Hyatt Family of Sammamish  
Gay Jensen  
Molly Kemper  
Anne Knapp (5)  
Nicole Knowles  
Trisha and Dale Lair  
Rhonda Langham  
Jacob Langley  
Jeff Leppo (2)  
Cammi Libby

Drs. Marti and Rob Liddell  
Stacy Lill  
Leland Lopez  
Jessie Maxwell  
Christine McKnight  
Evan McMurray  
Mark McSherry  
Lyla Miller  
Nadiri  
Eric Norberg  
Elliot Olmsted  
Nancy and Mark Pellegrino  
Bob Plotnick and Gay Jensen  
Liam and Caden Pong (3)  
Helen, June and Laura Pratt  
Ridesharing  
Noah and Jonah Rose

Tasha and Grayson Ryan  
Science  
Mia Shearer  
SIG at Overlake Zoology Class 2015  
Bryan Slinker  
Mr. and Mrs. Neil Smith  
Julie Swanson  
Dave Towne  
Vip and his doctors  
Jill Walker (3)  
Margie Wetherald and Len Barson (2)  
Chris Whitney  
Blaen Windham  
Susie Wyckoff

# GIFTS IN MEMORY OF

Barry Joseph Booher  
Billie Bradley  
Jullie Buckingham (15)  
Andrea Burlando (2)  
Orville Fields  
Heidi Frohring  
Marian Merritt Goddard (3)  
Gorilla Nina  
Margery Elise Putnam Harper  
Hazel Henderson

Christina Caie Horst (2)  
Joan Hovnanian  
Pat Hsu  
Andy Hulslander  
Sophia Flynn Kavanaugh  
Pas de Chat Kero  
Julia Waring Krick  
Chuck Lumm  
My mother  
Robert Ormsby

Tom Porro  
Steve Prchal  
Alea Price  
Michael Ritter  
Linda Roberts  
Jupiter Roo  
Doug Schaaf  
Dennis Schnabel  
Stewart Stern (4)  
Glenn Swan (2)

Lee Tanzer  
Ruby Taylor  
Richard Bradstock Tripp  
Mary VanMeter  
Francisco Vargas  
Cristy Whitney (2)  
Beverly Wilkie (2)

# ESTATE GIFTS

Mikkalsen Charitable Remainder Unitrust  
Estate of Helen and Allen Mull  
Estate of Dorlesca H. Ryan





# THANK YOU FOR A WONDERFUL YEAR!



Dennis Dow, WPZ

