



Investing in the Zoo

Help fund a number of improvement and renovation projects to keep our world-class exhibits in top shape. **Fund an entire item, or a share in any amount.**

New Facilities for Colobus Monkeys

Improved holding facilities to allow keepers and vets to safely care for our colobus monkeys.

\$5,000 share :: \$50,000 share

Upgrading the Giraffe Corral

Rebuilding the giraffe corral where giraffes spend their time when not on exhibit.

\$4,000 share :: \$40,000

Oregon Spotted Frog Recovery Project

Physical expansion of the “headstarting” facilities needed to breed endangered Oregon spotted frogs to be released into the wild.

\$3,500 share :: \$35,000

Introducing Spotted Owls Back Into the Wild

Renovation of an existing off-exhibit raptor facility to accommodate one breeding pair of spotted owls and their offspring.

\$3,500 share :: \$35,000

New Facilities for Hippos

Improved holding facilities to allow keepers and vets to safely care for hippos.

\$1,500 share :: \$15,000

Exhibit Upgrades for Steller’s Sea Eagle

Exhibit upgrades to prepare their exhibit for this new addition to our collection.

\$1,500 share :: \$15,000

“Zoo in the World”

Conservation Messaging

Increase visitor awareness of the zoo's active role in conservation projects around the world through regularly updated displays around the zoo.

\$1,000 share:: \$10,000

Emergency Preparedness

New emergency generators to keep our animals safe and warm in case of natural disaster.

\$1,000 share:: \$10,000

Upgrading Interpretive Signage

Updating interpretive displays to better educate visitors about animals and their habitat and to inspire conservation action.

\$500 share :: \$5,000

It's easy!

You can fund an item for a week, a month or a whole year as your budget allows.

Use the gift form on page 50.





Sustainable Zoo

To shrink our environmental footprint and model the way for others, the zoo is undertaking initiatives in order to become more sustainable through these new projects. **Fund an entire item, or a share in any amount.**

Water Recycling

Gray-water recycling system will save the zoo hundreds of gallons of water.

\$2,500 share :: \$25,000

Feline House Remodel

Work to keep the feline house in great shape with electrical and heating upgrades designed to keep our big cats healthy and happy.

\$8,500 share :: \$100,000

Maintaining the Zoo

A world-class zoo needs constant maintenance and upgrades to provide the best in animal care. Critical updates to maintain the quality of our facilities.

\$8,500 share :: \$100,000

Blooms of the Zoo: Horticulture

Most visitors come to the zoo with animals on their mind, but plants are the first thing they see. Plants bring our exhibits alive and make the zoo a lush urban oasis of green. Help support our outstanding horticulture department. **Fund an entire item, or a share in any amount.**

Annual Blooms

New annual plants for zoo grounds.
\$1,000 share :: \$10,000

Keeping the Zoo Green

Overall horticulture program support.
\$1,000 share :: \$10,000

Blooms for Jaguars

New annual plants for jaguar exhibit.
\$50 :: \$500

Northern Blooms

New annual plants for Northern Trail exhibit.
\$500 share :: \$5,000

It's easy!

You can fund an item for a week, a month or a whole year as your budget allows.

Use the gift form on page 50.





Conservation Solutions

One person can make a difference. Your support can help save animals and their habitats through our conservation efforts, including our Partners for Wildlife projects with organizations around the world. **It's easy! Fund an item for a year, a month or a week.**

Protect the Unique Wildlife and Habitats of Africa

Overall program support.

\$1,000 one week

\$3,500 one month :: \$45,000 one year

Botswana Wild Dog Research Project

Through the long-term commitment of Seattle-native Dr. John "Tico" McNutt, endangered African wild dogs are being protected in Botswana's Okavango Delta. Using applied research — such as utilizing scent to deter dogs from attacking domestic livestock — and public education, McNutt is providing long-term study and monitoring of wild dog populations to create strategies to combat carnivore/human conflict.

\$250 one week
\$1,250 one month :: \$15,000 one year

Gorilla Research in the Republic of Congo

Led by Thomas Breuer, Congolese researchers and educators receive training and support that build in-country capacity while increasing the scientific understanding and protection of the natural ecology and wildlife of *bai* ecosystems. In addition, this long-term, local presence has provided an effective deterrent to poaching.

\$500 one month
\$5,000 one year



**Tarangire Elephant Program:
Tanzania Wildlife Migration**

Dr. Charles Foley's Tanzania Wildlife Migration work is identifying and protecting wildlife migration corridors and dispersal areas outside the wildlife parks where they live. This, along with the creation of migration easements, will help alleviate human-elephant conflicts which are increasingly threatening the well being of Tarangire elephants.

\$250 one week

\$1,250 one month :: \$15,000 one year

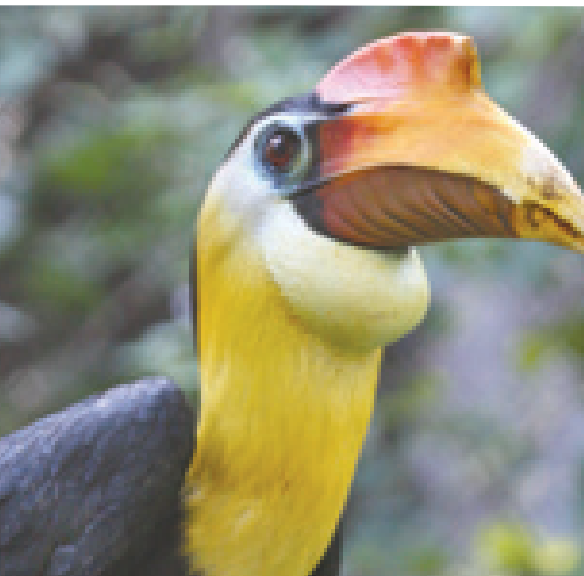
**Wildlife and People in Kenya:
Waterhole Restoration Project**

Spearheaded by the Maasai Association in Kajiado Central District of Kenya and Woodland Park Zoo staff member Kakuta Hamisi, the Waterholes Project provides water to people, livestock and wildlife, and increases villager participation in wildlife and habitat conservation efforts while improving their standard of living through sustainable economic development for their villages.

\$1,000 one month

\$10,000 one year





Working Together to Protect the Wildlife of Asia and the Pacific

Overall program support.

\$1,000 one week

\$10,000 one month :: \$100,000 one year

Cranes of Asia: Russia and Beyond

Under the leadership of Dr. Sergei Smirenski, the Muraviovka Park for Sustainable Land Use in Far East Russia provides critical habitat for more than 200 species of birds including the highly endangered red-crowned crane, along with community-based education and sustainable development.

\$1,000 one month

\$10,000 one year

Hornbill Conservation and Research

Developed and led by Dr. Pilai Poonswad, this project works with villages in critical hornbill habitats to turn nest poachers into nest protectors. In this win-win-win scenario for hornbills, local people, and researchers, the hornbills get protected, the villagers get some much needed income, and the researchers obtain valuable data from the nest protectors.

\$500 one month

\$7,500 one year

Hutan Asian Elephant Conservation Program

Wife and husband team Drs. Isabelle and Marc Ancrenaz, along with the assistance of local villagers, are finding practical solutions to protect crops so that elephants and humans can live peacefully together. Villagers are active participants in the long-term conservation and management of the elephant population in this region of Borneo.

\$250 one week

\$1,250 one month :: \$15,000 one year

It's easy!

You can fund an item for a week, a month or a whole year as your budget allows.

Use the gift form on page 50.

International Field Training in Conservation Biology

Dr. Randall Kyes of the University of Washington leads field training courses in conservation biology for university students and park rangers in Indonesia, Nepal, China, Democratic Republic of Congo, Bangladesh, and Thailand to establish regional experts who will design and conduct effective management and conservation programs to help ensure the future of wildlife and habitats.

\$500 one month

\$5,000 one year

International *Partula* Snail Field Project

This endemic land snail of French Polynesia was once so abundant it was the focus of a 50-year evolution study. Now overrun by exotic invaders, its population is in peril, but a team of researchers and captive breeding specialists, including Woodland Park Zoo staff member Ric Brewer, are going all out to save this small but critically important part of the Tahitian ecosystem.

\$100 one month

\$1,000 one year

Gunung Palung Orangutan Conservation

Dr. Cheryl Knott of Harvard University leads this community-based program to protect orangutan habitat from destruction within Gunung Palung National Park in Borneo and to foster sustainable stewardship of the area's natural resources.

\$750 one month

\$7,500 one year

Saving Endangered Snow Leopards

In the high mountains of Central Asia, snow leopards have thrived for thousands of years in one of the harshest environments on our planet. The Snow Leopard Trust protects the snow leopard and its mountain habitat through successful community-led conservation programs, such as Snow Leopard Enterprises, a handicraft cooperative with community partnerships in several Asian countries.

\$250 one week

\$1,250 one month :: \$15,000 one year





Tree Kangaroo Conservation Program

The signature international field conservation program of the Partners for Wildlife program. Based at Woodland Park Zoo and directed by Dr. Lisa Dabek, the Tree Kangaroo Conservation Program (TKCP) is a community-based approach to protect the endangered tree kangaroo in ways that also meet the needs of local communities in Papua New Guinea. This includes documenting the natural history and conservation status of tree kangaroos through scientific research, expanding access to health care for villagers, improving schools through support of teachers and empowering villagers to sustainably manage natural resources. TKCP is working with local landowners to set aside over 150,000 acres of pristine forest as a new form of protection under PNG law. The YUS Conservation Area, as it will be known, provides the highest level of protection for wildlife and habitat in the country!

Conservation Planning

The tree kangaroo project is working with the local community and the PNG Department of Environment & Conservation toward a long-term management plan for the Conservation Area. It will include a monitoring strategy to document and track the populations of key endemic species such as the Matschie's tree kangaroo as well as birds of paradise within the protected area.

\$1,000 one month

\$10,000 one year

Conservation Area Monitoring

Help to establish a long-term monitoring protocol for wild tree kangaroo populations along with other key indicators of success for the new Conservation Area in Papua New Guinea.

\$1,000 one month

\$15,000 one year

Mapping Forests

GPS technology is used to accurately map the boundaries and features of the Conservation Area. These maps will greatly assist in long-term management of this incredibly diverse cloud forest and help protect tree kangaroos and other species.

Overall program support

\$250 one trip

\$500 one month :: \$5,000 one year

Investing in Education

By establishing a scholarship program at a teachers' college in Papua New Guinea, three students from the local community will graduate and be assigned full-time teaching positions in their village schools. \$1,400 per student per year

Investing in Healthcare

Working with local communities to improve health services is an important part of the benefit for local landowners to conserve forest habitat and wildlife populations. The Healthy Village, Healthy Forest project improves access to health care in remote villages. Health training workshops teach village health volunteers basic diagnosis and treatment of common ailments and teach village midwives to improve maternal and child health. The program also provides medical supplies and brings doctors to villages for health patrols.

\$250 one month

\$2,500 one year

It's easy!

You can fund an item for a week, a month or a whole year as your budget allows.

Use the gift form on page 50.





Pacific Northwest

Innovative Solutions to Our Region's Needs

Overall program support.

\$1,000 one week

\$5,000 one month :: \$66,000 one year

Protect a Threatened Northwest Butterfly

A multi-group project that fosters habitat preservation of the threatened Oregon silverspot butterfly as well as breeding and reintroducing butterfly pupae to the wild. The Woodland Park Zoo team is led by Erin Sullivan, West Team collection manager.

\$250 one week

\$1,250 one month :: \$15,000 one year

Grizzly Bear Recovery in the North Cascades

Led by Chris Morgan, Grizzly Bear Outreach Program is protecting the last grizzlies in the North Cascades by educating people about how to co-exist with bears through education efforts with residents, schools and community leaders.

\$750 one month

\$10,000 one year

Raptor Ecology of the Shrub-Steppe

Working in cooperation with the Washington State Department of Fish and Wildlife, biologist Jim Watson and Woodland Park Zoo staff Gretchen Albrecht and Tom Aversa are working to understand ferruginous hawks and golden eagles in Washington state's Columbia Basin.

\$500 one month

\$7,000 one year

Reintroducing Western Pond Turtles

Partners Frank and Kate Slavens head up Columbia River Gorge field work as part of this comprehensive program to recover this species by headstarting and releasing hatchlings back into the wild.

\$500 one week

\$2,000 one month :: \$25,000 one year

Staff Participation in Conservation

Enable zoo staff to contribute their considerable expertise to field conservation programs.

Recently, the zoo sent keepers to Papua New Guinea to assist with the Tree Kangaroo Conservation Program's field work and to help release silverspot butterfly larvae into the wild. Sharing of knowledge and best practices learned at the zoo increases the success of these projects.

\$100 one month

\$1,000 one year

Northwest Zoo & Aquarium Alliance

Woodland Park Zoo's share of support to this consortium of eight zoos and aquariums from British Columbia, Washington, Oregon and Idaho, dedicated to promoting conservation in the Pacific Northwest ecoregion. Alliance members work together to identify and implement effective regional conservation actions through species recovery, green practices and inspiring citizen action at home. Alliance members are also accredited by the Association of Zoos & Aquariums.

\$1,000 one month

\$16,000 one year

It's easy!

You can fund an item for a week, a month or a whole year as your budget allows.

Use the gift form on page 50.





Conservation Dues Program

A granting program that funds collaborative field conservation projects with other zoos, aquariums and field conservationists, including some SSP projects (Species Survival Plan), to preserve species and habitats as well as link zoo animals to their conservation efforts in the wild. **It's easy! Fund an item for a year or a month.**

Conservation Dues Program

Overall program support

\$1,000 one month :: \$12,000 one year

Asian Elephants of Sri Lanka

\$100 one month :: \$1,000 one year

Bushmeat Crisis Task Force

\$100 one month :: \$1,000 one year

AZA Butterfly Conservation Initiative

\$100 one month :: \$1,000 one year

Egyptian Tortoise Conservation Program

\$100 one month :: \$1,000 one year

South American Flamingo Conservation

\$100 one month :: \$1,000 one year

Humboldt Penguin Conservation Center

\$100 one month :: \$1,000 one year

International Iguana Foundation

\$100 one month :: \$1,000 one year

International Rhino Foundation

\$100 one month :: \$1,000 one year

IUCN Tapir Specialist Group

\$100 one month :: \$1,000 one year

Komodo Dragon SSP

\$100 one month :: \$1,000 one year

Lion Tamarins of Brazil Fund

\$100 one month :: \$1,000 one year

Rodrigues Environmental Educator Project

\$100 one month :: \$1,000 one year

Sun Bear Conservation

\$100 one month :: \$1,000 one year

Sumatran Tiger Conservation

\$100 one month :: \$1,000 one year

Turtle Survival Alliance

\$100 one month :: \$1,000 one year

It's easy!

You can fund an item for a week, a month or a whole year as your budget allows.

Use the gift form on page 50.

· · · Making a Difference · · ·

Hellen Mull

Helen Mull and her late husband Allen always had a special place in their hearts for animals. So much so, in fact, that late in their lives they made a pact that they would leave their money to organizations that protect and care for animals.

When Allen passed on, Helen began to set that plan in motion. However, her financial advisor suggested that she accelerate her plans so that she could see the “fruit” of their tremendous generosity. With his help, she set up a trust that support half a dozen Puget Sound organizations dedicated to the protection and care of animals for years and years to come.



Here at the zoo, this gift supports many animal care initiatives ranging from animal exams and general health needs to nutritional programs. Each time Helen comes to the zoo, we visit another of the animals her generosity has benefited. We keep asking her which is her favorite animal, but she says she likes them all! So, with over 1,000 animals and 300 species, we're going to be busy visiting them with Helen in the coming years. What fun!

We salute Helen and Allen's love of all creatures, great and small. And on behalf of the zoo and all the other organizations around our community also benefiting from their generous gifts...thank you, thank you, thank you!

Inger Osberg

Inger Osberg would be a force to reckon with if you ever told her you didn't like animals! In addition to many visits to Woodland Park Zoo, Inger and her husband, Allan, have traveled all over the world seeing many different cultures and the animals that inhabit our beautiful world.

Inger is a big fan of our zoo because we make such an effort to teach young children and adults how we take care of our animals in much the same way as parents take care of their children: the animals see the dentist, visit the doctor and are provided with nutritious meals and opportunities to be active. She knows that for many of our million visitors each year, the zoo is the only place they will see wild and endangered animals and learn about how they can make sure that these animals continue to exist in our world. In that way, each of us learns what our responsibilities are to ensure that animals are taken care of and protected, whether it be one of our Sumatran tigers or the little kitty that becomes a part of the family.

Inger and Allan are very generous in their support of the zoo and she hopes you will also support the zoo and even think about volunteering at Woodland Park Zoo.



..... Making a Difference



Education

Help fund Woodland Park Zoo's year-round "living classroom," where people of all ages learn about animals and their habitats and develop a love for nature. From Zoomazium to school programs, and from the development of teens as emerging conservation leaders to providing access to programs for all children, you can support programs that provide excellent education programming and fun. **It's easy! Fund an item for a year, a month or a week.**

Connecting Kids to Nature (Zoomazium and Beyond ...)

Zoomazium Woodlot

Transform the vacant woodlot into Zoomazium's backyard! Provide opportunities for caregivers and children to explore nature first-hand, through scavenger hunts, unstructured full-body play and creative expression.

\$2,500 one month

\$30,000 one year

It's easy!

You can fund an item for a week, a month or a whole year as your budget allows.

Use the gift form on page 50.

Zoomazium Programs

Lively, developmentally appropriate programs for children introduce early learners to the world of wildlife through active play, up-close animal encounters, story time and theater.

Overall program support

\$5,000 one week

\$15,000 one month :: \$200,000 one year

Toddler Time

Daily activities engage our youngest guests and their caregivers in active learning and nature-based fun!

\$500 one month

\$5,000 one year

Nature Exchange

Encourage young learners to explore local natural areas and share treasures, photos, drawings and stories with others.

\$2,000 one month

\$25,000 one year

Research tools for young explorers

Help children explore the outdoors with binoculars, field notebooks, nets and other observation tools.

\$250 one month

\$2,500 one year

Zoo Adventure Overnights

The wildest sleepover in town! These adventures include special presentations and private zoo tours, meeting interesting creatures and discovering the secret lives of our scaly, furry and feathery animals as they snort, growl and fluff themselves to sleep.

Overall program support

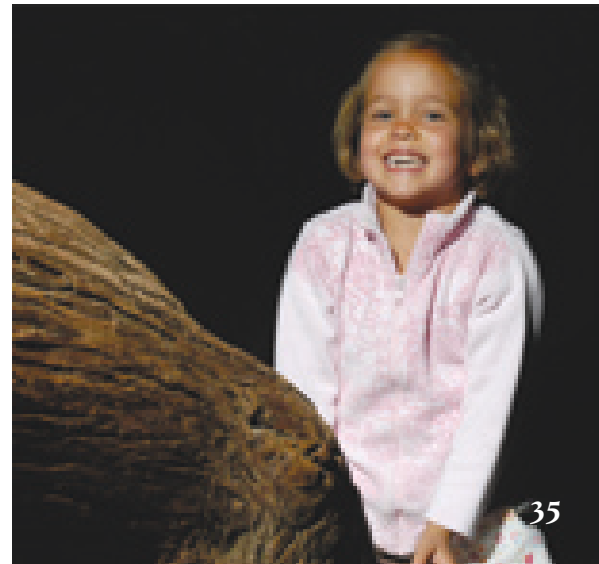
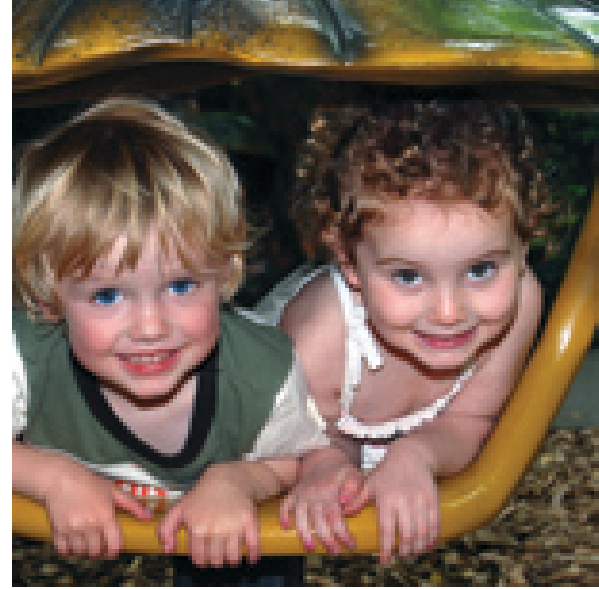
\$2,500 one week

\$10,000 one month :: \$110,000 one year

One Zoo Overnight Adventure

for 30 people

\$975





Classes, Camps, and Zoo U!

From bugs to wolves, participants of all ages discover the amazing world of endangered animals through zoo classes, camps or clubs. Camps and Zoo U focus on new and exciting aspects of the animal world. Instructors use developmentally appropriate games, activities, tours and biofacts to excite children about the natural world and motivate the children to become involved.

Overall program support

\$5,000 one week

\$25,000 one month :: \$250,000 one year

One class for early childhood, children, families or adults

\$300

One week of Zooper Day Camp or Kinder Camp for 12 children

3-9 years old

\$1,750

One week of Zoo U Camp for 12 teens and tweens

\$2,250



Making Science Learning Come to Life

School-to-Zoo Program: Bringing Classrooms to the Zoo

These programs, such as our award-winning Forest Explorers, are designed to support elementary and secondary school science curriculum concepts by engaging students in making observations and developing a curiosity about the natural world.

Overall program support

\$7,500 one week

\$25,000 one month :: \$350,000 one year

Bring one class to the zoo

\$500

School and Community Outreach Programs

Wild Wise: An award-winning, hands-on program that travels to schools across Washington and focuses on Washington wildlife through interactive multimedia presentations and field trips to natural areas.

SOAR (Save Our Amazing Raptors): Zoo naturalists, accompanied by birds of prey (raptors), visit classrooms throughout King County to teach K-12 students about raptors and raptor ecology.

Overall program support

\$5,000 one week

\$15,000 one month :: \$200,000 one year

One Wild Wise classroom presentation and field program

\$1,400

Send one SOAR program to a classroom

\$500

Teacher Workshops

Professional development workshops and summer institutes on plants, animals and the environment that help K-12 teachers learn how to use the zoo's educational resources to meet state and local educational requirements and develop environmentally responsible citizens.

Overall program support

\$1,250 one week

\$5,000 one month :: \$70,000 one year

One workshop for 40 teachers

\$7,200





Provide Engaging Zoo Experiences

Zoo Experiences

Daily programs for visitors of all ages include chances to meet zoo staff and volunteers, learn about wildlife and their habitats and opportunities to engage in conservation action.

Overall program support

\$5,000 one week

\$15,000 one month :: \$200,000 one year

Biofacts, materials and program props

\$2,000

Visitor programs developed by Zoo Corps teens

\$2,500

Portable microphone system for presentations to visitors

\$1,500

“Activity Zones” engage families in animal encounters, artifact exploration or friendly competition at one of these themed program areas.

\$1,500



Penguin Programming: *New in 2009!*

Zoo Corps interns and interpretive staff engage visitors in penguin behavior observations and engage in research and data collection just like real scientists!

\$500 one month

\$5,000 one year

Cultural Interpreters on the African Savanna

Visitors have the opportunity to meet and learn from East African interpreters who share their stories about life on the African savanna and conservation of savanna wildlife.

\$1,500 one week

\$7,500 one month :: \$80,000 one year

Cultural Interpreters on the Peruvian Coast

Sponsor a penguin researcher from our field site in Punta San Juan to visit Woodland Park Zoo as a cultural interpreter and engage visitors and staff with real stories of conservation work.

\$1,500 one month

\$20,000 one year

Nose-to-Nose Animal Encounters

Unique, engaging opportunities provide zoo visitors an up-close experience with an arthropod, reptile, small mammal or bird.

“Animal Encounters” programs

\$5,000 one week

\$15,000 one month :: \$200,000 one year

Biofacts, materials and program props

\$2,000

Providing Pathways for Action: Community Engagement and Conservation Stewardship

Zoo Corps: Teen Volunteer Program

A three-tiered volunteer program for teens 14 to 18 years old focuses on teen development through wildlife and conservation education.

Overall program support

\$5,000 one week

\$25,000 one month :: \$250,000 one year

Continuing education for teens

\$500 one month

\$5,000 one year

Teen intern stipends

\$1,500 one week

\$7,500 one month :: \$88,000 one year





Volunteer Program

Zoo Ambassador and docent volunteers assist zoo visitors, present education programs and increase visitor awareness of animals and conservation.

Overall program support

\$2,000 one week

\$10,000 one month :: \$100,000 one year

Four-month training program for docents

\$250 one week

\$1,250 one month :: \$15,000 one year



Backyard Habitat Workshops and Evening Clinics

Participants in these workshops and evening clinics learn about the benefits of native plants, low-impact yard care and how to provide habitat for wildlife in their own backyards.

Overall program support

\$350 one week

\$1,500 one month :: \$17,500 one year

One Backyard Habitat evening clinic for 30 participants

\$1,500

One Backyard Habitat Workshop for 30 participants

\$6,500

It's easy!

You can fund an item for a week, a month or a whole year as your budget allows.

Use the gift form on page 50.

Education Research

Mapping the Zoo Experience

This initiative is aimed at mapping the visitor experience at the zoo, from the physical journey to the high and low points, in order to create an engaging and inspiring trip to the zoo for visitors of all ages.

\$250 one week

\$1,250 one month :: \$14,500 one year

Audience Research

Development and implementation of research and evaluation projects related to visitor experiences, education programs and development of new exhibits and interpretive elements.

\$2,500 one week

\$10,000 one month :: \$110,000 one year

Evaluation and Research Capacity Building

Will expand the role of the zoo as a training ground for students in museum studies, education psychology and other social science disciplines. Working alongside zoo evaluators, students learn how to evaluate and improve learning experiences.

Overall program support

\$250 one week

\$1,000 one month :: \$12,000 one year

Training and mentoring

for up to 10 students/year

\$150 one week

\$750 one month :: \$8,000 one year



Kids' Page

You can make a difference, too!

ZooParent Adoption

Become a ZooParent by adopting one of these wonderful animals. Help support animal care here at the zoo and our conservation efforts around the world!

\$100 ZooParent Plus!

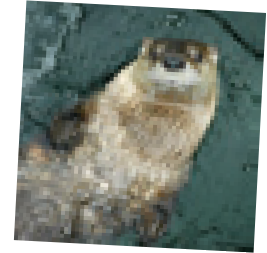
- Personalized ZooParent certificate
- Photo of your animal
- Animal fact sheet
- ZooParent decal
- Adorable plush animal
- Two Woodland Park Zoo guest passes
- Your name on ZooParent sign at Woodland Park Zoo



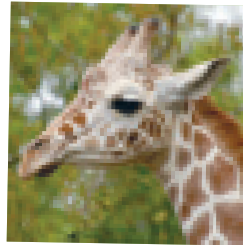
Sumatran Tiger



Grizzly Bear



River Otter



Giraffe



Humboldt Penguin



Snow Leopard



Orangutan



African Wild Dog



Tree Kangaroo



ZooParent Adoption

Purchaser Information

Name _____

Address _____

City _____ State _____ Zip Code _____

Email _____

Phone _____

I would like to adopt a(n) _____

\$100 ZooParent Plus

This is a gift.

Recipient's Name _____

Address _____

City _____ State _____ Zip Code _____

Phone _____

Please indicate:

Mail packet to donor.

Mail packet to recipient.

This is a donation only. No benefits needed.

Payment Information

Total \$ _____

Payment type Check (payable to Woodland Park Zoo)

Visa MC AmEx

Credit Card # _____

Expiration Date (mm/yy) _____ Security Code _____

Signature _____

Please return to: Woodland Park Zoo, Attn: ZooParent
601 N 59th Street, Seattle WA 98103



Bring the Penguins Home!

Help bring penguins back to Woodland Park Zoo to fill the new exhibit by adopting a penguin or a whole family!

Individual Humboldt Penguin

\$10,000

Breeding Pair of Humboldt Penguins

\$20,000

**Family of Humboldt Penguins
and Nest Burrow**

\$30,000



It's easy!

You can fund an item for a week, a month
or a whole year as your budget allows.

Use the gift form on page 50.



Calling all LionHearts!

If you are planning to leave a legacy gift to Woodland Park Zoo, you are a LionHeart! There are so many ways in which you can make a gift that will keep on giving in perpetuity. Not only that, some types of legacy gifts can provide you with income during your lifetime! But it is important to know which types of assets, such as IRAs, have special tax benefits when given to the zoo as part of an estate. Please let us know if you've included the zoo in your estate plans so we may thank you.

Please contact Anne Knapp at 206.548.2443 or anne.knapp@zoo.org for more information.



Family Philanthropy

Giving and Receiving Spans all Ages

One of the great joys at Woodland Park Zoo is experiencing the creative ways that our donors of all ages give to the zoo. Giving spans the generations... Lucas Engles-Klann is only 3... Vivian and Joseph McCann, on the other hand, made a legacy gift through their estate plans. Many of our donors support the zoo through unrestricted gifts, but these two gifts reflect the deep love for specific animals or horticulture areas that donors often have. We hope you enjoy learning a bit more about giving through the stories of Lucas, Joseph and Vivian.





Vivian and Joseph McCann – A Legacy Gift

In 2008, Woodland Park Zoo was literally “for the birds!” With our incredibly popular new flamingo exhibit, it became evident that our visitors love our birds. So did Vivian and Joe McCann, and they let that be known with a large legacy gift to the zoo for birds and bird exhibits.

Vivian and Joe led lives that always included animals. While most of their years were lived in Seattle, they also lived near the Taku Inlet in Alaska where Joe was with the U.S. Custom Service. Through the years, they enjoyed traveling all over the United States, Europe and Japan, and especially enjoyed cruises. At home, gardening and their love of animals kept them very engaged. They were never without pets, including cats, dogs and birds. Over the years, their generous spirit revealed itself in their support of the homeless, as well as their generous support of animal causes. In their estate planning, both Joseph and Vivian, with the help of their attorney, Timothy A. Law, left the majority of their estate to organizations that meet two important needs: the less fortunate and the needs of animals.

Woodland Park Zoo is one of the organizations that received a very generous legacy gift from the McCanns. With the opening of the flamingo exhibit in 2008 and the new penguin exhibit in 2009, we think that Vivian and Joseph would be well pleased that our birds are front and center at Woodland Park Zoo.



We encourage those who have specific animals, horticulture, field conservation, or education goals in mind when considering an outright or legacy gift to discuss your goals with us so that we can assure you that your gift fits within the mission of the zoo and, most importantly, so we can express our deep appreciation for your support.

Lucas Engles-Klann – A 3 year old begins his philanthropic journey

Lucas Engles-Klann has been coming to the zoo since his first birthday, but his love of animals started very young. His nursery was decorated in a jungle theme and plush animals abound in his home. He's attended several classes at the zoo and loves his weekly visit to see his favorite animals. The primates have become a source of fascination for Lucas, who says, "They are so cute, and they love each other, and they love me. They are so beautiful."

Recently he announced that for his birthday he wanted to adopt all the gorillas! When he was told that they didn't have enough money for that, he looked at his parents and said: "Then get some more money." Thus was born the first annual Dine Out for Animals event. Lucas insisted that it be vegetarian, he would pick out the dishes and he would help invite people and his moms would do the cooking.

So many friends signed up for the dinner that they had two sittings. Several weeks later, Lucas came to the zoo with his mothers and a check for Hugh Bailey, one of the zoo's long time gorilla keepers. Hugh and Lucas became fast friends as Hugh told Lucas all about the gorillas. Lucas got to see the gorillas climb and explore on the new "trees" that have just been recently installed in their exhibit and that Lucas' gift will help fund. Then he met Nathan Dean who helped build the "trees." Lucas really enjoys his new friendship with Hugh and Nathan. Now he can't wait for the second Dine Out for Animals event.

For more information on how your family can get involved in philanthropy together, contact Anne Knapp at 206.548.2443 or anne.knapp@zoo.org.



Thank you for making a gift to support the zoo's future!

Purchaser Information

Name _____

Address _____

City _____ State _____ Zip Code _____

Email _____

Phone _____

Area I would like to fund _____

Gift Amount \$ _____

This gift is anonymous.

Payment Information

Payment type Check (payable to Woodland Park Zoo)

Visa MC AmEx

Credit Card # _____

Expiration Date (mm/yy) _____ Security code _____

Signature _____

I want to make a pledge: One-time Annual

Do not trade my name with other organizations.

Please return to: Woodland Park Zoo, Attn: Donations
601 N 59th Street, Seattle WA 98103

Ways of Giving

There are many ways to make a gift to Woodland Park Zoo:

By check or credit card

You can use the attached form or give securely online at www.zoo.org/support.

Make a pledge

By spreading payments over a period of time — typically not more than five years — pledges allow you to make larger commitments and fulfill them at a comfortable pace.

Stock transfer

To make a gift through an electronic transfer of stock, please call us at 206.548.2651 for instructions.

Planned gift

A planned gift is another tax-advantaged way to support the zoo. Planned gifts can reduce estate taxes, provide a life income for yourself and others and enhance retirement income. You can also provide for Woodland Park Zoo in your will or living trust. For more information, contact Anne Knapp, planned giving officer at 206.548.2443.

Matching gifts

Your gift may be doubled or even tripled! Many employers sponsor matching gift programs and will match charitable contributions made by their employees. Spouse and retiree gifts are also often matched. Please ask your employer for details. For more information, call 206.548.2646 x1206.



Don't Recycle This Catalog!

Keep it instead. Sit down with your family anytime during the coming year and pick out an item you'd like to fund together, or have your children or grandchildren pick their own items. It's a great way to teach them the value of giving to others.

Photos Cover, Mat Hayward :: Page 1, J.A. McGraw/mcgrawmedia.com :: Page 2, Ryan Hawk :: Page 3, Ryan Hawk :: Page 4, iStock :: Page 5, Ryan Hawk :: Page 6, Ryan Hawk :: Page 7, Dennis Dow :: Page 8 from top, Dennis Dow, Dennis Dow :: Page 9 from top, Dennis Dow, Dennis Dow :: Page 10 from top, Dennis Dow, Dennis Dow :: Page 11 from top, Dennis Dow, Dennis Conner :: Page 12 from top, Ryan Hawk, Dennis Dow :: Page 13, Ryan Hawk :: Page 14 from top, Kelly McAllister, Michael Townsend :: Page 15, Ryan Hawk :: Page 16 from top, Ryan Hawk, Ryan Hawk :: Page 17, Ryan Hawk :: Page 18, Ryan Hawk :: Page 19, Dennis Dow :: Page 20, Emily Schumacher :: Page 21, Brittney Bollay :: Page 22 from top, Thomas Breuer, Ryan Hawk :: Page 23, Carol Raitt :: Page 24 from top, Courtesy HRCF, Dennis Dow :: Page 25 from top, Courtesy Snow Leopard Trust, Milan Trykar :: Page 26, Russ Mittermeier :: Page 27 from top, TKCP, TKCP :: Page 28 from top, Erin Sullivan, Ryan Hawk :: Page 29, Dr. Erika Travis :: Page 30, Dennis Dow :: Page 32, Anne Knapp :: Page 33, Anne Knapp :: Page 34, Ryan Hawk :: Page 35 from top, Brittney Bollay, Ryan Hawk :: Page 36 from top, Tianna Klineburger, Ryan Hawk :: Page 37 from top, Ian Glaedle, Janice Smith :: Page 38, Karen Ofsthus, Ryan Hawk :: Page 39 from top, Ryan Hawk, Ryan Hawk :: Page 40 from top, Ryan Hawk, Ryan Hawk :: Page 41 from top, Emily Schumacher, Tianna Klineburger :: Page 42 from top, Dennis Conner, Ryan Hawk, Ryan Hawk, Ryan Hawk, Ryan Hawk, Dennis Dow, Ryan Hawk, Dennis Dow, Ryan Hawk :: Page 43, Mat Hayward :: Page 44, Ryan Hawk :: Page 45, Ryan Hawk :: Page 46, Ryan Hawk :: Page 47, Ric Brewer :: Page 48 from top, Courtesy of Joni Marsicano, Dennis Dow :: Page 49, Courtesy Stephanie Engles-Klann, Mat Hayward :: Inside back cover, Dennis Dow :: Back Cover, Ryan Hawk





WOODLAND PARK ZOO

Woodland Park Zoo
saves animals and their habitats
through conservation leadership
and engaging experiences,
inspiring people to learn,
care and act.

601 North 59th Street
Seattle, Washington 98103

www.zoo.org
donations@zoo.org
206.548.2646

