



YOUR GUIDE TO A HEALTHY GARDEN

*Use healthy gardening practices
to control pests and attract
more pollinators to your home
or community garden*

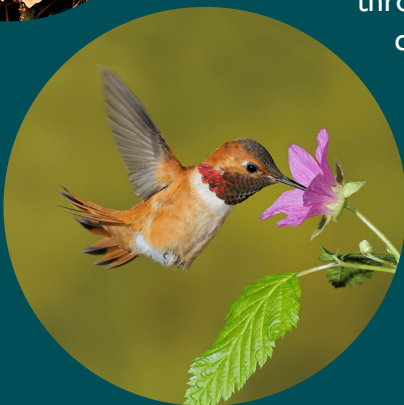
Control pests naturally with smart gardening practices

*Smart gardening practices can keep
plants healthy and able to resist and
recover from pest damage.*

Build healthy soil with compost and proper
mulching. Before adding fertilizer, get a soil test
through your local agricultural extension or
conservation district.

**Water more deeply and less frequently
to promote root health.** Water in the
morning to avoid evaporation from the sun.

Attract beneficial insects by
planting flowers that provide
nectar, pollen and shelter.



Learn more at www.zoo.org/hellopollinators

Find the right plant for the right place

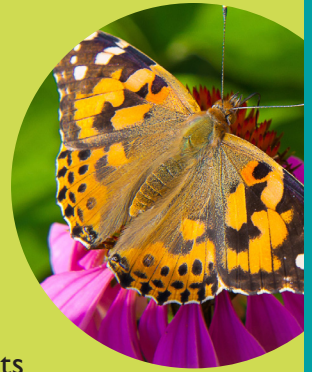
With minimal work, you can grow healthier, low-pest plants by choosing varieties best-suited for their location.



Evaluate your spring and summer climate. Long and hot, or mild and cool at night? Summer rains or drought-like conditions?

Identify naturally-growing plants where you live. Native plants will always perform best in your garden. Ask your local nursery for tips on non-native plants that grow well at home.

Divide your garden into zones. Clustering plants that grow in similar conditions allows you to manage large areas more easily.



Are your plants still pestered by pests?

Consult an expert! Determine if it's really a pest issue or if there is another reason why your plant isn't thriving. Reach out to your county's WSU Master Gardeners chapter or other local plant experts for advice.

Consider your options. Can you put this plant in another place? Are there other ways of protecting your plant from pests?



Did you know?

As of January 1, 2026, neonicotinoids, a class of pesticides known to harm pollinators, are no longer allowed for use by home gardeners on outdoor ornamental plants in Washington state. Visit WSDA's webpage to learn more!



If pest control is recommended, then you may need to contact a licensed pesticide applicator for help.

If you are applying a store-bought pesticide yourself, here are some tips:

- ✿ **Always** read the label
- ✿ **Avoid application** when pollinators are present
- ✿ **Do not treat** actively flowering plants
- ✿ **Apply** in the evening or early morning
- ✿ **Do not apply** in windy or rainy conditions



Learn more at www.zoo.org/hellopollinators